

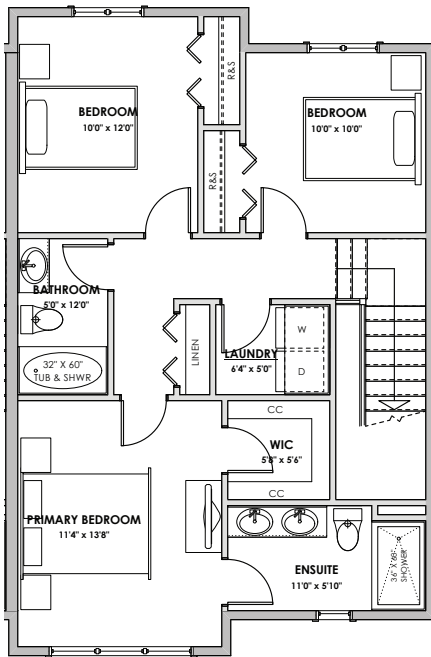
# DOLOMITE RIDGE TOWNHOMES

# WESTVIEW

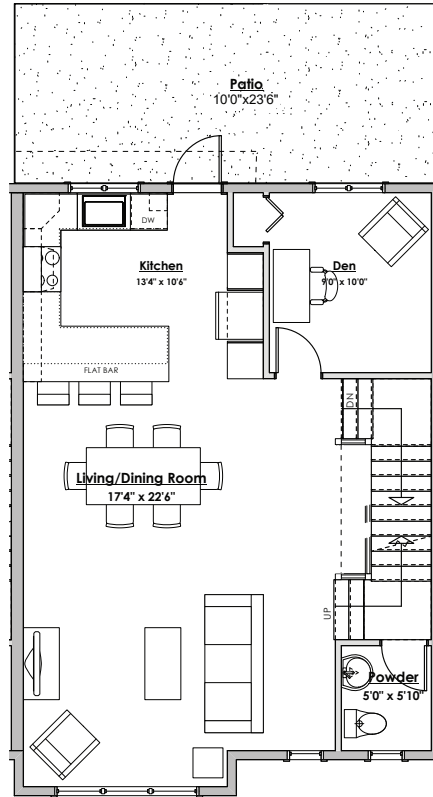


## WESTVIEW PHASE 4

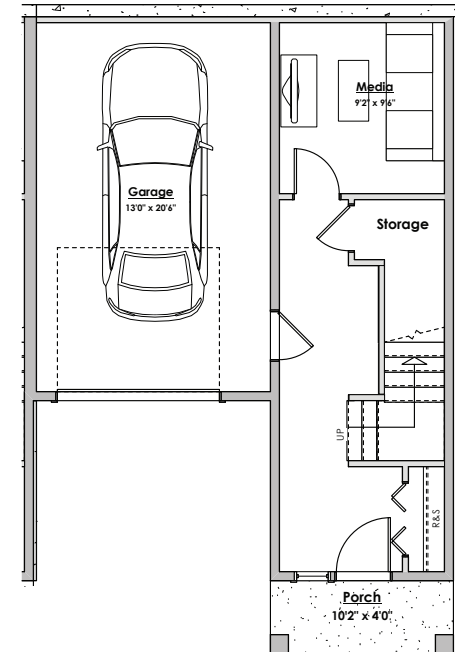
**BLOCK 7** | LIVING AREA TOTAL: 1808-1822 sq.ft. | GARAGE: 304 sq.ft.  
1431-1437 Dolomite Ridge



UPPER FLOOR  
731 sq.ft.



MAIN FLOOR  
777 sq.ft.



LOWER FLOOR  
314 sq.ft.

\*Note: In the interest of maintaining high standards, the developer reserves the right to modify plans, specifications and design without prior notice. Drawings contained within are artist renderings only. Sizes and dimensions are approximate and may vary with actual plan and survey. Exterior style may change pending municipal approval.

Retaining Wall construction types:  
 -Non-mortered boulder wall  
 -Concrete Cast in place wall  
 -Pre-cast masonry landscape wall  
 -Retaining walls will be designed, placed and constructed in the sole discretion of the developer.

Furniture as shown on plans are for layout purposes only and are not included in the sale.

[westviewbc.ca](http://westviewbc.ca)



Mike Hartshorne | 250-474-4800  
Personal Real Estate Corporation

