

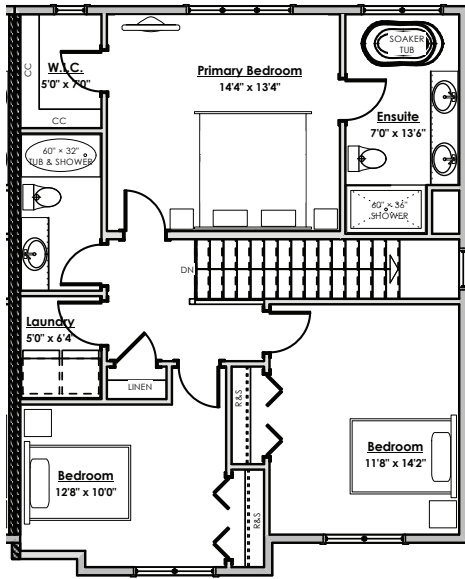
# DOLOMITE RIDGE TOWNHOMES

# WESTVIEW

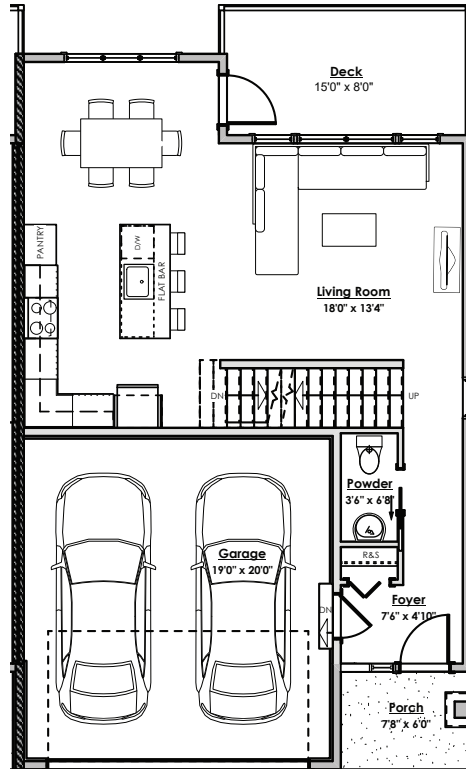


## WESTVIEW PHASE 4

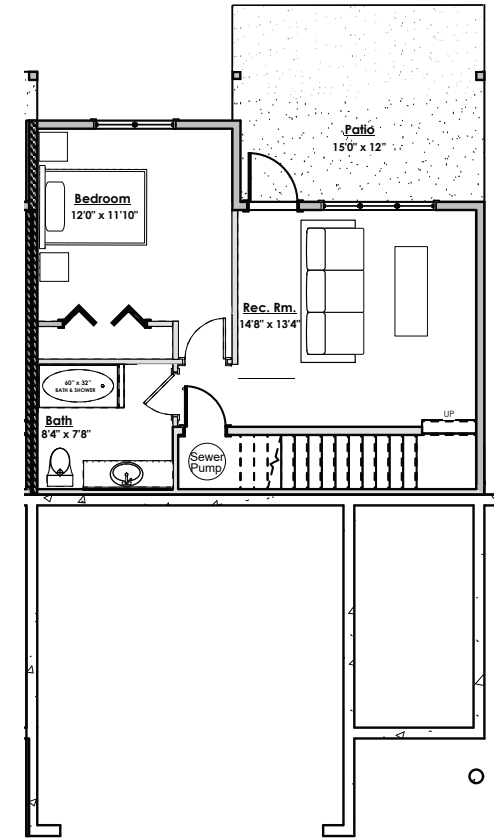
**BLOCK 4** | LIVING AREA TOTAL: 2180-2218 sq.ft. | GARAGE: 418 sq.ft.  
1432-1436 Dolomite Ridge



UPPER FLOOR  
947 sq.ft.



MAIN FLOOR  
686 sq.ft.



LOWER FLOOR  
585 sq.ft.

\*Note: In the interest of maintaining high standards, the developer reserves the right to modify plans, specifications and design without prior notice. Drawings contained within are artist renderings only. Sizes and dimensions are approximate and may vary with actual plan and survey. Exterior style may change pending municipal approval.

Retaining Wall construction types:  
 -Non-mortared boulder wall  
 -Concrete Cast in place wall  
 -Pre-cast masonry landscape wall  
 -Retaining walls will be designed, placed and constructed in the sole discretion of the developer.

Furniture as shown on plans are for layout purposes only and are not included in the sale.

[westviewbc.ca](http://westviewbc.ca)



SOUTH ISLAND  
HOME TEAM

Mike Hartshorne | 250-474-4800  
Personal Real Estate Corporation

