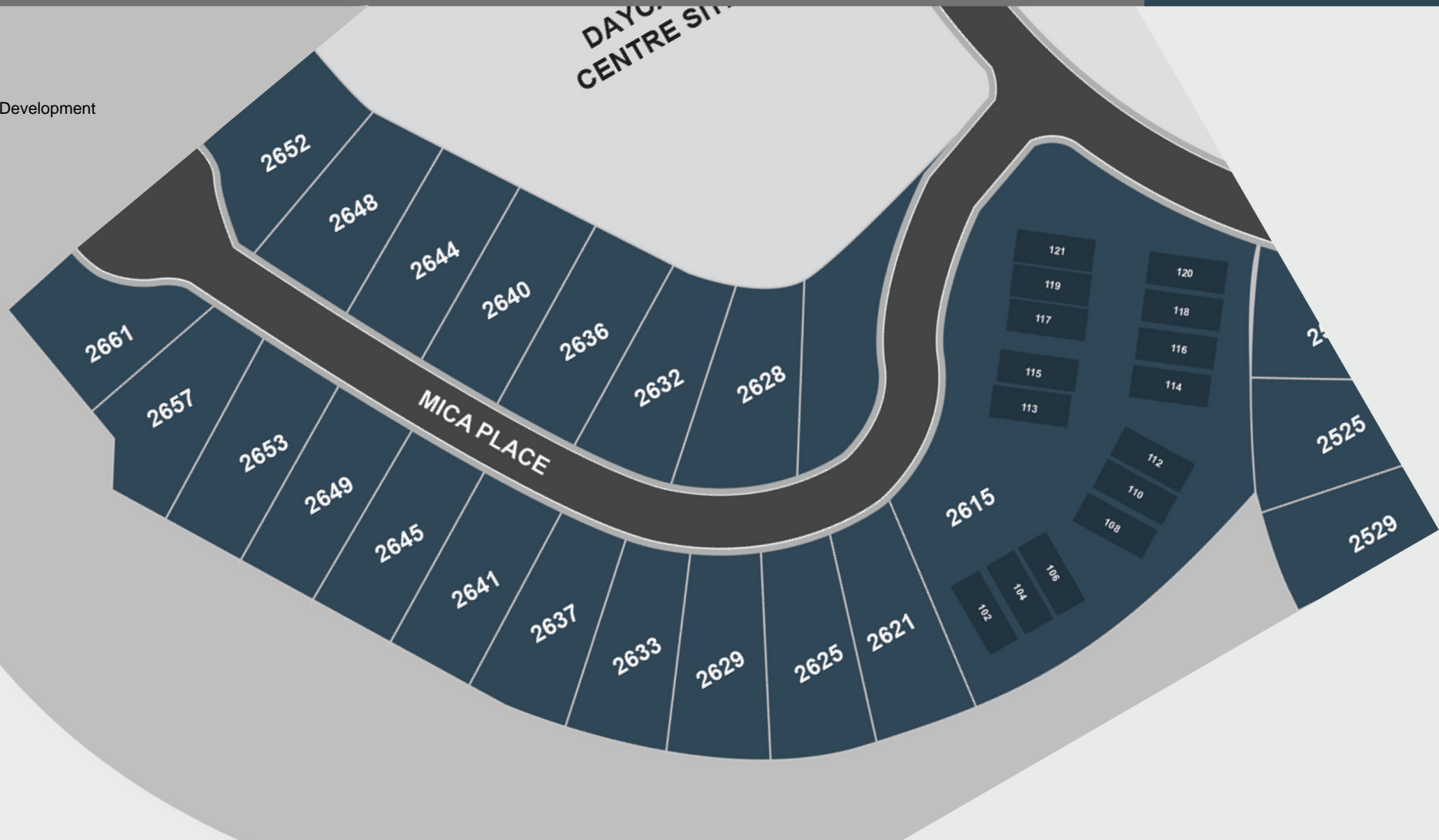


WESTVIEW



Future Development



COAST CAPITAL REALTY

*NOTE: In the interest of maintaining high standards, the developer reserves the right to modify plans, specifications and design without prior notice. Drawings contained within are artist renderings only. Sizes and dimensions are approximate and may vary with actual plan and survey. Exterior style may change pending governing parties approval. Retaining wall location and types may vary and are subject to municipal, engineering or developer discretion. Subject to change without notice.



QUALITY CONSTRUCTION. TRUSTED SERVICE.

WESTVIEW PHASE 5 - Single Family Homes



INSPIRED INTERIORS

- Two colour scheme options designed by Dawn Garneau of Award Winning Nygaard Interior Designs
- High volume, 9ft tall ceilings on main floor
- Stylish and discrete 2" urban faux wood collection blinds, or manual roller shades, or automated roller shades*
- Durable, dyed carpeting with 15 year warranty in bedrooms and bonus/media room**
- High quality laminate or hardwood flooring*; environmentally friendly and carries 25 years warranty, on main floor including entry, kitchen dining living, and powder room and hallways
- Quality trim package throughout the home
- Large windows for plenty of natural light
- Sleek, Napoleon Ascent 36" gas fireplace with blower fan
- Painted artisan solid wood banister and railings**
- LED lighting in the bedrooms, halls, laundry, walk in closet and living room
- White closet organizer in master bedroom walk in closet
- Convenient wire shelving in bedrooms
- White solid shelves in pantry*
- Built Green Certified

EASY LIVING

- High quality, energy efficient heating and cooling mini split system with modern design and quiet operation, providing you year-round comfort.
- Hot water on demand with recirculation line to deliver hot water to faucets quickly which conserve water and energy
- Fridge water line connected
- Standard rough in for gas range and BBQ outlet
- Fiber Optic telecommunications network connected to a smart panel
- Cable and telephone in living room, master bedroom and media room**
- Soffit plugs for Christmas lights
- Exterior weatherproof plugs
- Carbon monoxide & direct wire smoke detectors as per BC Building Code
- 200 AMP service
- Pantry**, walk-in closet and laundry room include motion activated lights
- Rough in car charger. (Wiring only, no breaker or outlet included)

GOURMET KITCHENS

- Your choice of 3 options of durable quartz countertops with tiled backsplash
- Black pulldown faucet with Power Clean technology
- Stylish pendant fixture over kitchen island
- Sleek undercabinet LED puck lights
- Cabinet doors and sliding drawers with soft-close hardware
- Undermount 18-gauge stainless steel sink
- Premium stainless-steel appliance package including:
 - o 4 Element Slide-In Electric Range
 - o Energy Star refrigerator
 - o Dishwasher with touch control
 - o Inverter Stainless Steel Microwave Oven

BEAUTIFUL BATHROOMS

- Elegant quartz countertop in all bathrooms
- Luxurious tile flooring in the ensuite and main bathroom
- Decorative polished chrome towel bars and paper holders
- Soft close toilet seats in the main house

LAUNDRY

- Dedicated laundry room
- Front-load dryer and Energy Star washer
- Laminate countertop above laundry appliances
- Main house laundry with tile flooring

* depending on the house

** if applicable

Some homes may include a sewer grinder pump in the lower floor

IN THE EVENT OF SHIPPING DELAYS OR DISCONTINUED PRODUCTS AND TO MAINTAIN HIGH STANDARDS, THE DEVELOPER RESERVES THE RIGHT TO MODIFY PLANS, SPECIFICATIONS AND DESIGN WITHOUT PRIOR NOTICE.



Helping you is what we do.™

Features - August 23rd, 2023

Mike Hartshorne** | 250-474-4800 | [Westviewbc.ca](https://www.westviewbc.ca)



*NOTE: In the interest of maintaining high standards, the developer reserves the right to modify plans, specifications and design without prior notice. Drawings contained within are artist renderings only. Sizes and dimensions are approximate and may vary with actual plan and survey. Exterior style may change pending governing parties approval. Retaining wall location and types may vary and are subject to municipal, engineering or developer discretion. Subject to change without notice. **Personal Real Estate Corporation.

WESTVIEW PHASE 5 - Single Family Homes



CURB APPEAL

- Multi-level homes with double garages
- Private and easy-care yards
- Large oversized decks with aluminum railings and patios for outdoor living**
- Pre-coloured fibre cement exterior siding,** carrying a 15 year warranty
- Cultured Stone Accents**
- Energy efficient double-glazed vinyl windows with argon gas
- 30 year warranty laminated fiberglass roofing shingle system with R-40 roof insulation
- Concrete driveways
- Two remote control devices for automatic garage door access
- Professionally landscaped yards with in-ground irrigation
- R-20 wall with 6 mil. polyurethane and acoustical sealant for your comfort
- Wall and ceilings of garages are insulated, drywalled and painted
- Cedar panel - rear and side up to the rear corner of the house are included.* Side fence panels from the rear corner to the front of the house, and gates to fully enclose the yards are available as an upgrade

SUITES

- One onsite parking space
- Laminate flooring in the main living areas and carpet in bedroom
- Linoleum in bathroom and laundry
- Quartz countertops in the kitchen & bathrooms
- Stainless steel appliance package:
 - o Electric ceramic top range
 - o Fridge with freezer
 - o Dishwasher with touch control
 - o Hood fan
 - o White electric stacked laundry center
- Cable and telephone in living room

PEACE OF MIND

Verity Construction's Homeowner Support

- Multiple Award-Winning Company, including Best Customer Service, Built Green Builder of the Year; and too many more to list - please visit our website for more information
- After framing, each home will have a rough-in walk through and lot orientation on-site
- Final walk-through prior to occupancy
- In-house customer service department
- Emergency service support

WARRANTY

Travelers' 2-5-10 New Home Warranty

- 2 year materials and labour warranty
- 5 year building envelope warranty
- 10 year structural defects warranty

** if applicable

Some homes may include a sewer grinder pump in the lower floor

Fencing will be provided as close to the property line as site conditions permit, as determined by the Developer

IN THE EVENT OF SHIPPING DELAYS OR DISCONTINUED PRODUCTS AND TO MAINTAIN HIGH STANDARDS, THE DEVELOPER RESERVES THE RIGHT TO MODIFY PLANS, SPECIFICATIONS AND DESIGN WITHOUT PRIOR NOTICE. EXTERIOR STYLE MAY CHANGE PENDING GOVERNING PARTIES APPROVAL. RETAINING WALL LOCATION AND TYPES MAY VARY AND ARE SUBJECT TO MUNICIPAL, ENGINEERING OR DEVELOPER DISCRETION.



Helping you is what we do.™

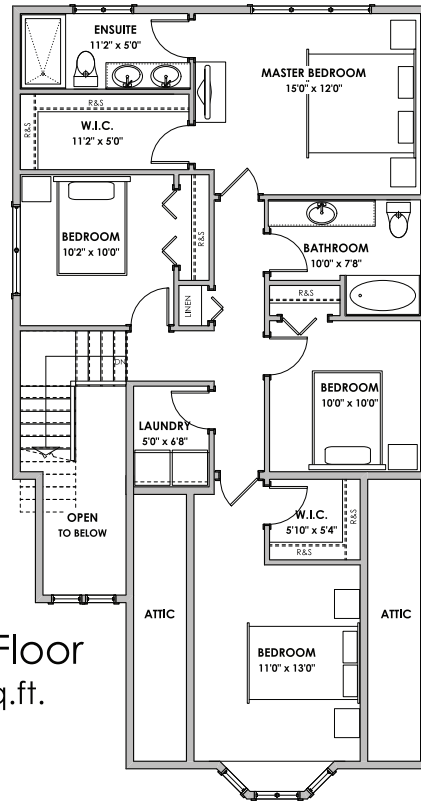
Features - August 23rd, 2023

Mike Hartshorne** | 250-474-4800 | [Westviewbc.ca](https://www.westviewbc.ca)

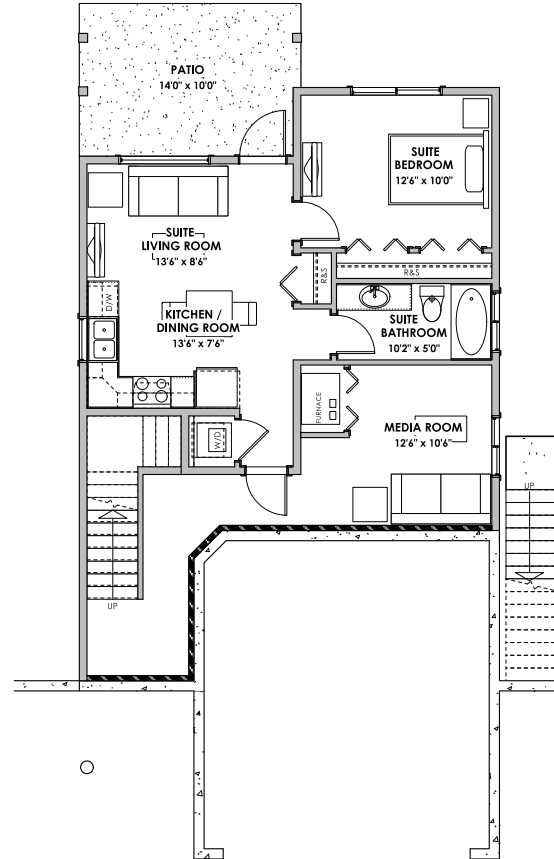


*NOTE: In the interest of maintaining high standards, the developer reserves the right to modify plans, specifications and design without prior notice. Drawings contained within are artist renderings only. Sizes and dimensions are approximate and may vary with actual plan and survey. Exterior style may change pending governing parties approval. Retaining wall location and types may vary and are subject to municipal, engineering or developer discretion. Subject to change without notice. **Personal Real Estate Corporation.

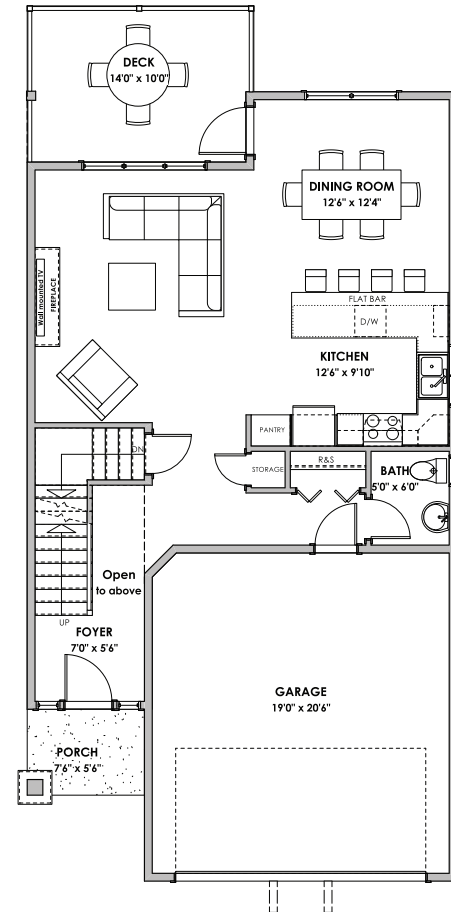
WESTVIEW



Upper Floor
1018 sq.ft.



Lower Floor
Primary: 309 sq.ft.
Suite: 506 sq.ft.



Main Floor
815 sq.ft.

LIVING AREA
Primary: 2142 sq.ft.
Suite: 506 sq.ft.
Total: 2648 sq.ft.

OTHER
Garage: 428 sq.ft.



'Bank' Craftsman - 2,648 sq. ft.

Westviewbc.ca

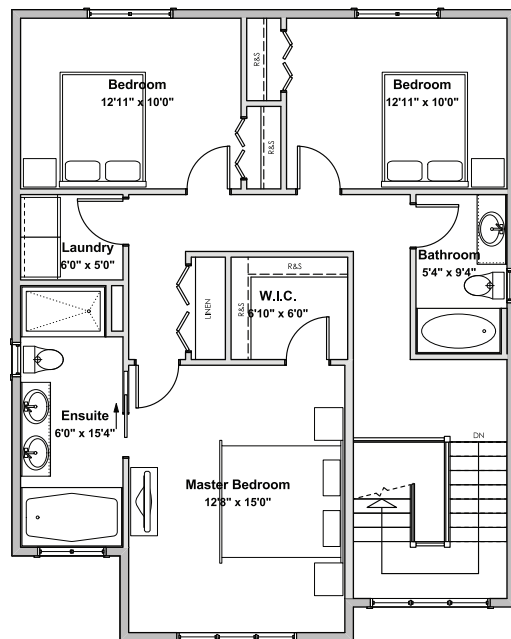
*NOTE: In the interest of maintaining high standards, the developer reserves the right to modify plans, specifications and design without prior notice. Drawings contained within are artist renderings only. Sizes and dimensions are approximate and may vary with actual plan and survey. Exterior style may change pending governing parties approval. Retaining wall location and types may vary and are subject to municipal, engineering or developer discretion. Subject to change without notice. Furniture as shown on plans are for layout purposes only and are not included in the sale.

VERITY
CONSTRUCTION
QUALITY. CONSTRUCTION. TRUSTED SERVICE.

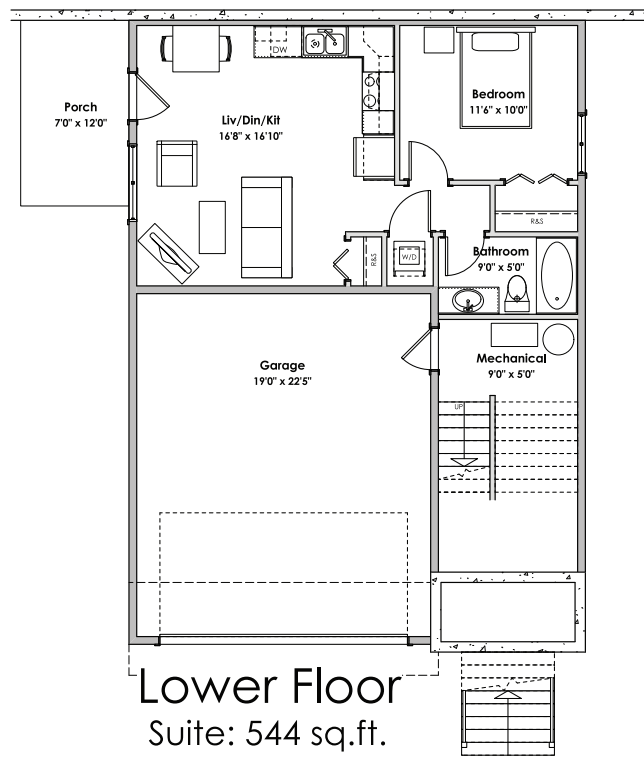
ROYAL LEPAGE

Helping you is what we do.

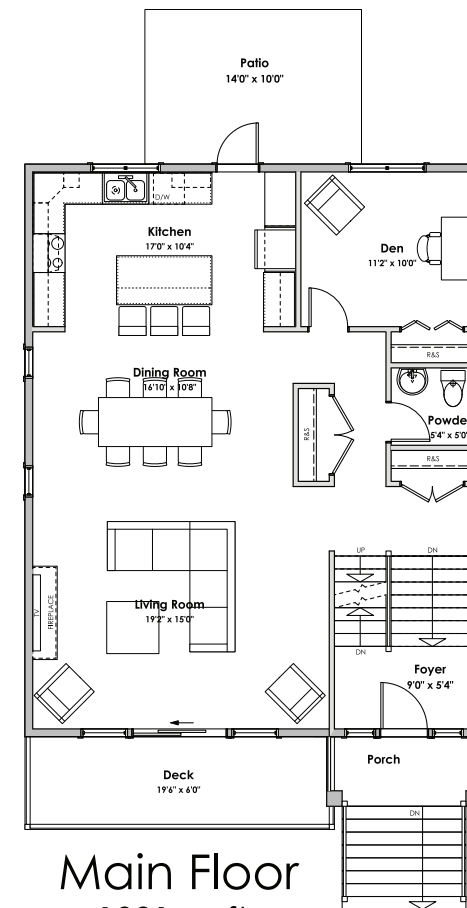
WESTVIEW



Upper Floor
1030 sq.ft.



Lower Floor
Suite: 544 sq.ft.
Primary: 53 sq.ft.



Main Floor
1091 sq.ft.



LIVING AREA
Primary: 2174 sq.ft.
Suite: 544 sq.ft.
Total: 2718 sq.ft.

OTHER
Garage: 463 sq.ft.

'Crest' Craftsman - 2,718 sq. ft.

Westviewbc.ca

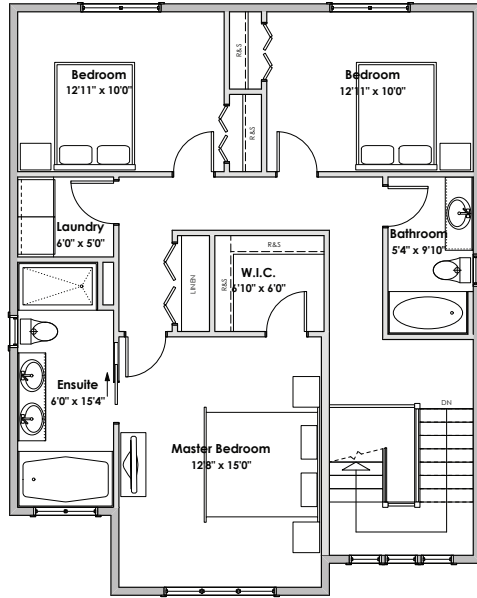
*NOTE: In the interest of maintaining high standards, the developer reserves the right to modify plans, specifications and design without prior notice. Drawings contained within are artist renderings only. Sizes and dimensions are approximate and may vary with actual plan and survey. Exterior style may change pending governing parties approval. Retaining wall location and types may vary and are subject to municipal, engineering or developer discretion. Subject to change without notice. Furniture as shown on plans are for layout purposes only and are not included in the sale.

VERITY
CONSTRUCTION
QUALITY. CONSTRUCTION. TRUSTED SERVICE.

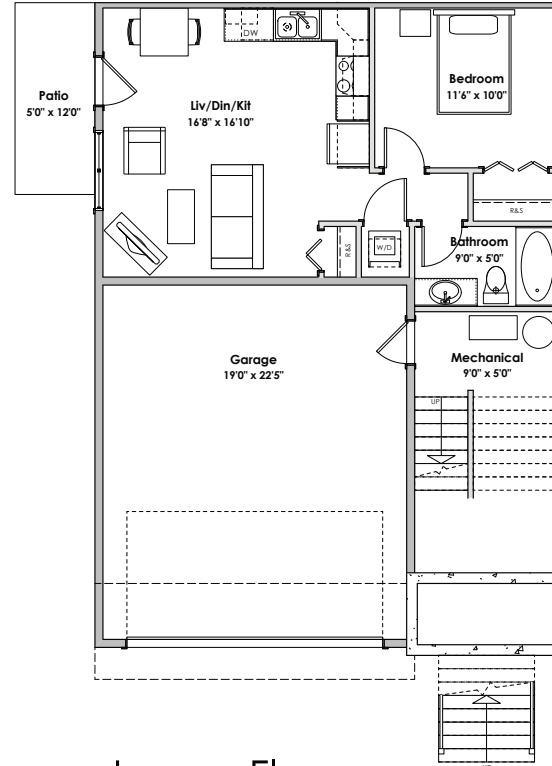
ROYAL LEPAGE

Helping you is what we do.

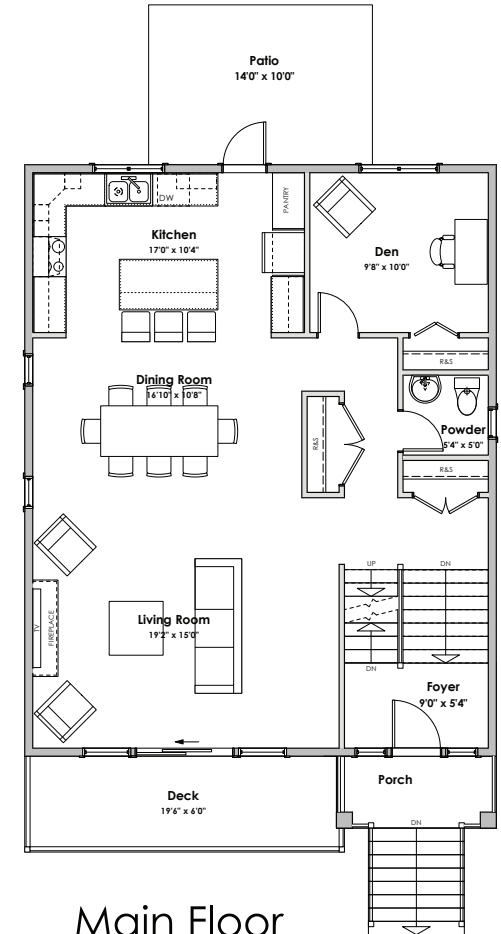
WESTVIEW



Upper Floor
1030 sq.ft.



Lower Floor
Suite: 544 sq.ft.
Primary: 53 sq.ft.



Main Floor
1091 sq.ft.

LIVING AREA
Primary: 2174 sq.ft.
Suite: 544 sq.ft.
Total: 2718 sq.ft.

OTHER
Garage: 463 sq.ft.



'Crest' Traditional - 2,718 sq. ft.

Westviewbc.ca

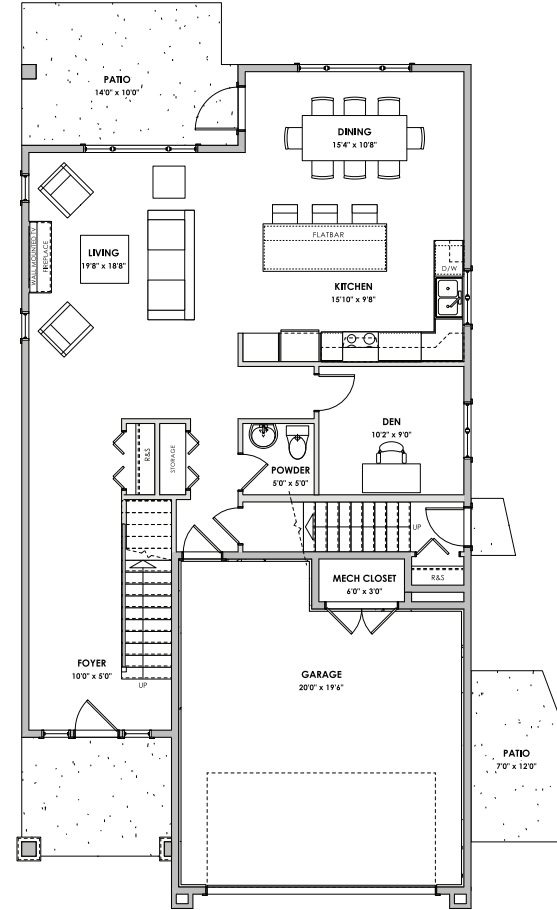
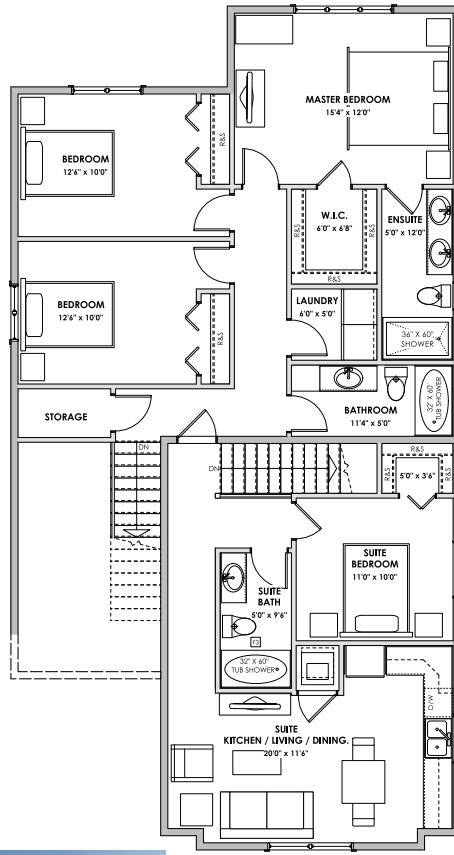
*NOTE: In the interest of maintaining high standards, the developer reserves the right to modify plans, specifications and design without prior notice. Drawings contained within are artist renderings only. Sizes and dimensions are approximate and may vary with actual plan and survey. Exterior style may change pending governing parties approval. Retaining wall location and types may vary and are subject to municipal, engineering or developer discretion. Subject to change without notice. Furniture as shown on plans are for layout purposes only and are not included in the sale.

VERITY
CONSTRUCTION
QUALITY. CONSTRUCTION. TRUSTED SERVICE.

ROYAL LEPAGE

Helping you is what we do.™

WESTVIEW



'Highland' Traditional - 2,609 sq. ft.

Westviewbc.ca

*NOTE: In the interest of maintaining high standards, the developer reserves the right to modify plans, specifications and design without prior notice. Drawings contained within are artist renderings only. Sizes and dimensions are approximate and may vary with actual plan and survey. Exterior style may change pending governing parties approval. Retaining wall location and types may vary and are subject to municipal, engineering or developer discretion. Subject to change without notice. Furniture as shown on plans are for layout purposes only and are not included in the sale.

LIVING AREA
Primary: 1945 sq.ft.
Suite: 664 sq.ft.
Total: 2609 sq.ft.

OTHER
Garage: 494 sq.ft.

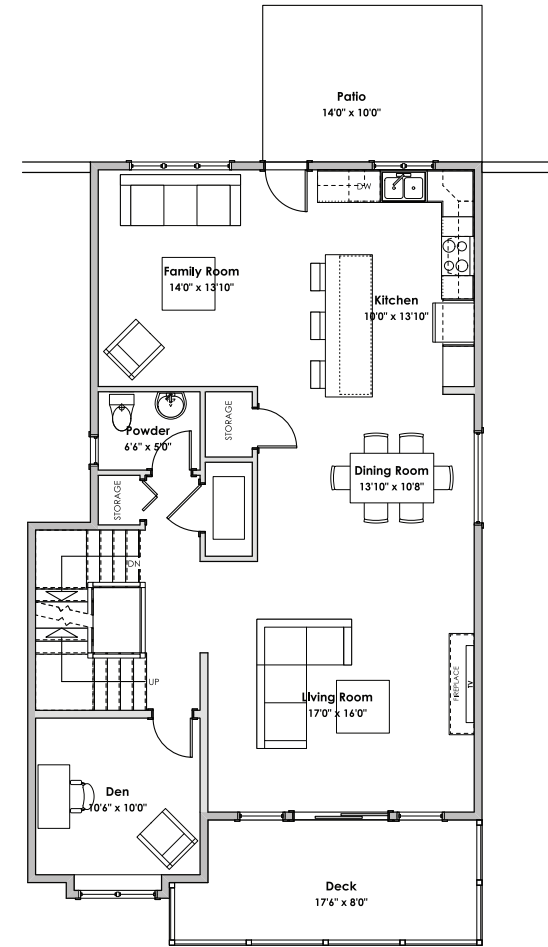
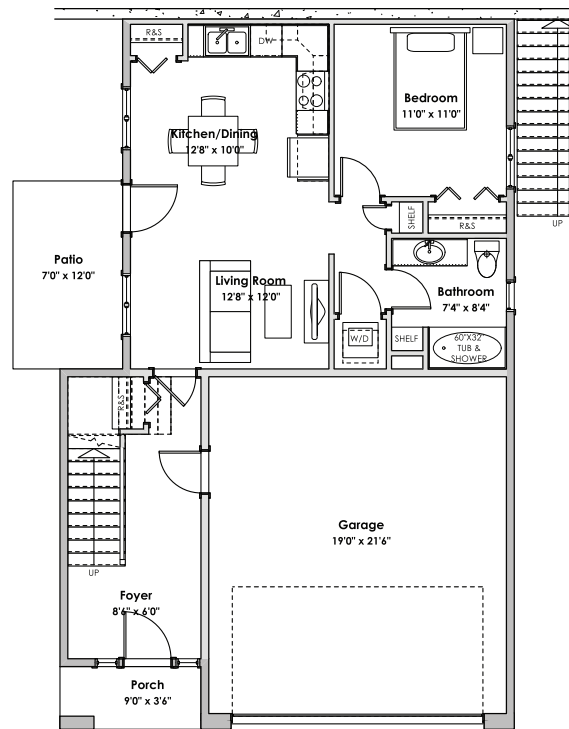
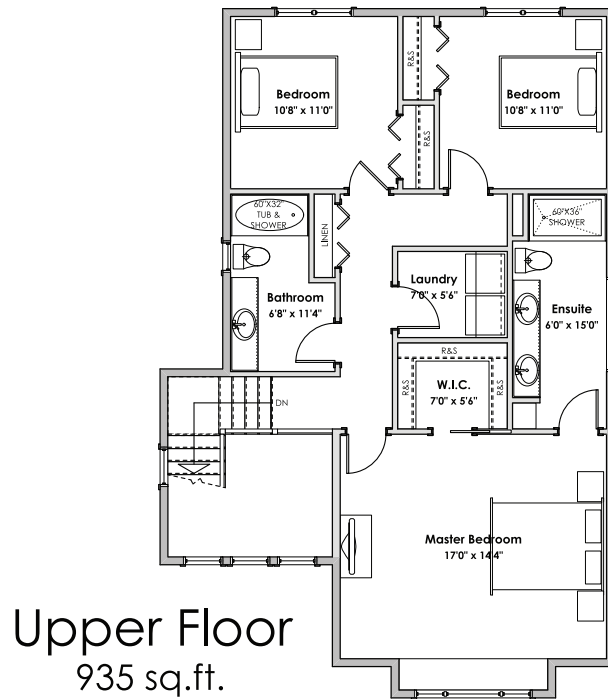
VERITY
CONSTRUCTION

QUALITY. CONSTRUCTION. TRUSTED SERVICE.

ROYAL LEPAGE

Helping you is what we do.

WESTVIEW



LIVING AREA
Primary: 2193 sq.ft.
Suite: 576 sq.ft.
Total: 2769 sq.ft.

OTHER
Garage: 450 sq.ft.



'Meridian' Traditional - 2,769 sq. ft.

Westviewbc.ca

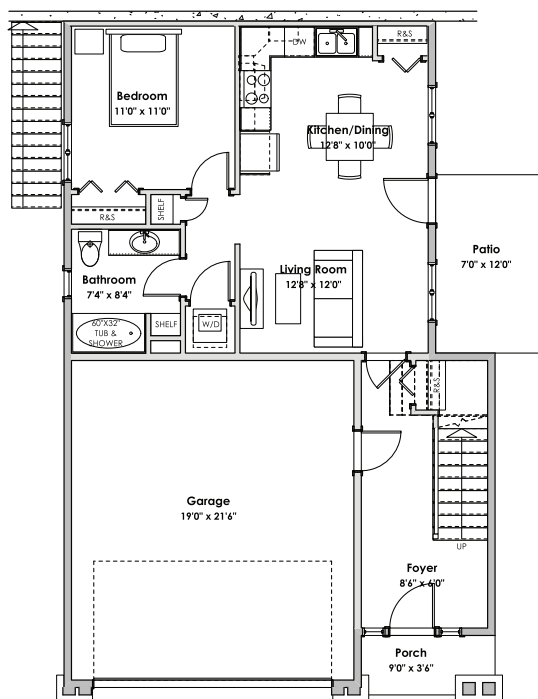
*NOTE: In the interest of maintaining high standards, the developer reserves the right to modify plans, specifications and design without prior notice. Drawings contained within are artist renderings only. Sizes and dimensions are approximate and may vary with actual plan and survey. Exterior style may change pending governing parties approval. Retaining wall location and types may vary and are subject to municipal, engineering or developer discretion. Subject to change without notice. Furniture as shown on plans are for layout purposes only and are not included in the sale.

VERITY
CONSTRUCTION
QUALITY. CONSTRUCTION. TRUSTED SERVICE.

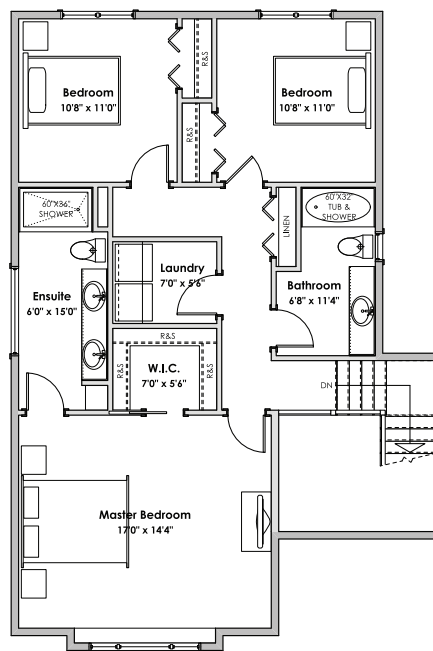
ROYAL LEPAGE

Helping you is what we do.

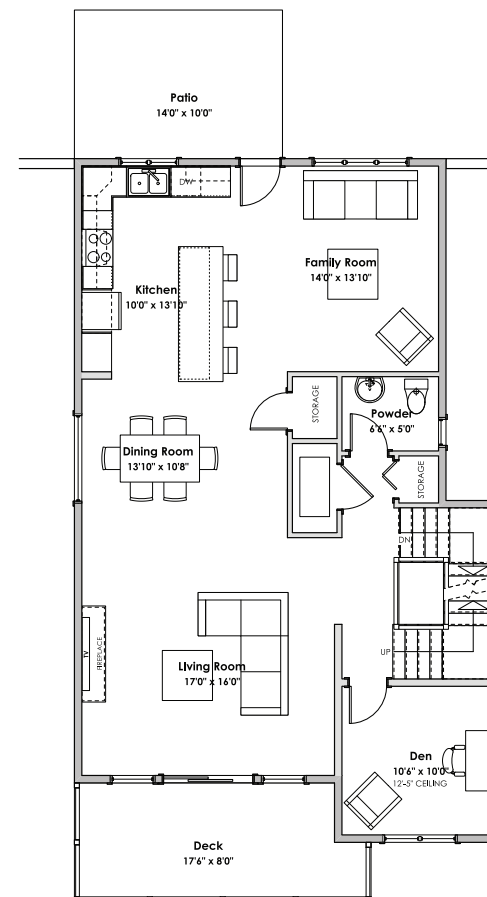
WESTVIEW



Lower Floor
Suite: 576 sq.ft.
Primary: 170 sq.ft.



Upper Floor
935 sq.ft.



Main Floor
1088 sq.ft.

LIVING AREA
Primary: 2193 sq.ft.
Suite: 576 sq.ft.
Total: 2769 sq.ft.

OTHER
Garage: 450 sq.ft.



'Meridian' Westcoast - 2,769 sq. ft.

Westviewbc.ca

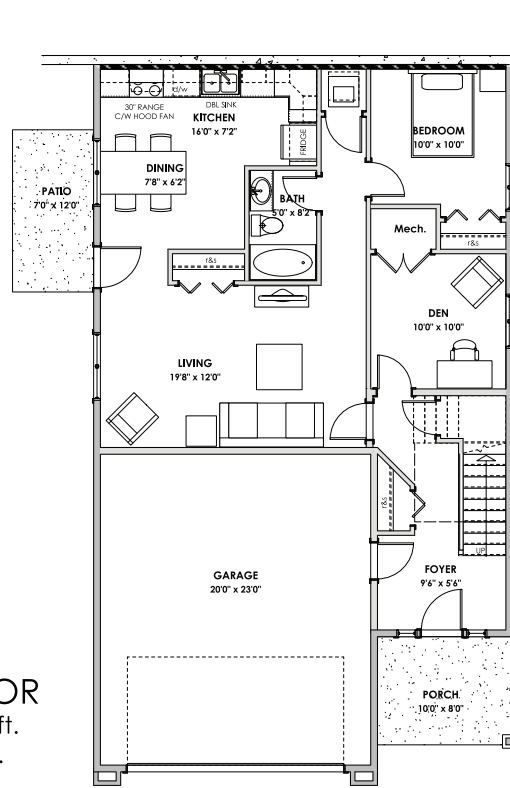
*NOTE: In the interest of maintaining high standards, the developer reserves the right to modify plans, specifications and design without prior notice. Drawings contained within are artist renderings only. Sizes and dimensions are approximate and may vary with actual plan and survey. Exterior style may change pending governing parties approval. Retaining wall location and types may vary and are subject to municipal, engineering or developer discretion. Subject to change without notice. Furniture as shown on plans are for layout purposes only and are not included in the sale.

VERITY
CONSTRUCTION
QUALITY. CONSTRUCTION. TRUSTED SERVICE.

ROYAL LEPAGE

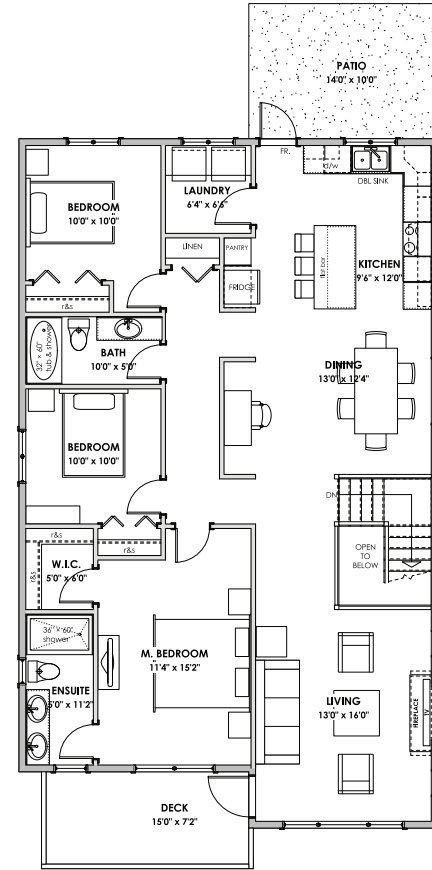
Helping you is what we do.

WESTVIEW



LOWER FLOOR

Primary: 317 sq.ft.
Suite: 701 sq.ft.



MAIN FLOOR

Primary: 1515 sq.ft.

LIVING AREA

Primary: 1832 sq.ft.
Suite: 701 sq.ft.
Total: 2533 sq.ft.

OTHER

Garage: 504 sq.ft.



'Palisade' Craftsman - 2,533 sq. ft.

Westviewbc.ca

*NOTE: In the interest of maintaining high standards, the developer reserves the right to modify plans, specifications and design without prior notice. Drawings contained within are artist renderings only. Sizes and dimensions are approximate and may vary with actual plan and survey. Exterior style may change pending governing parties approval. Retaining wall location and types may vary and are subject to municipal, engineering or developer discretion. Subject to change without notice. Furniture as shown on plans are for layout purposes only and are not included in the sale.

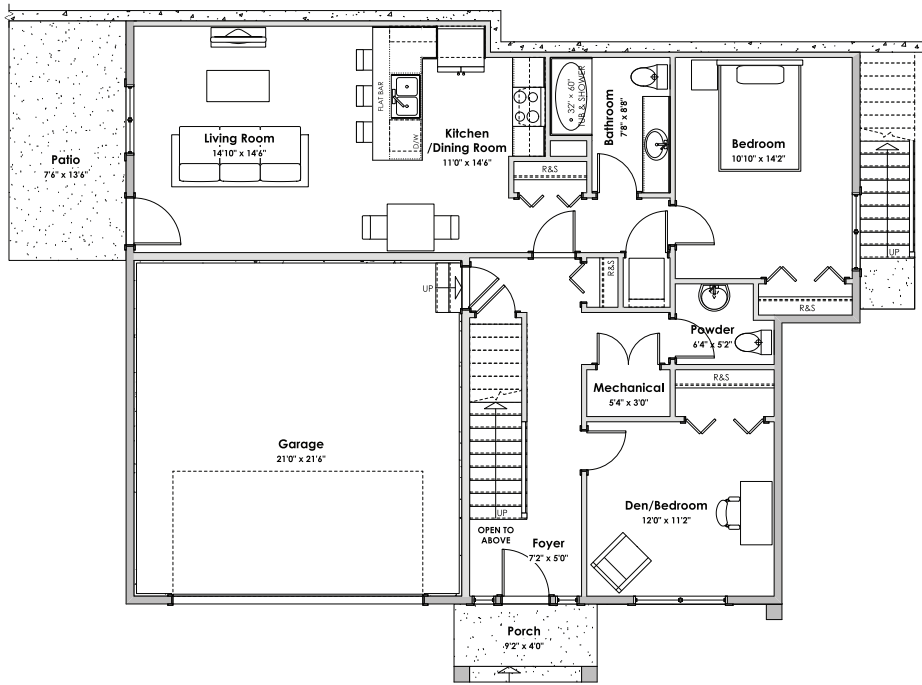
VERITY
CONSTRUCTION

QUALITY. CONSTRUCTION. TRUSTED SERVICE.

ROYAL LEPAGE

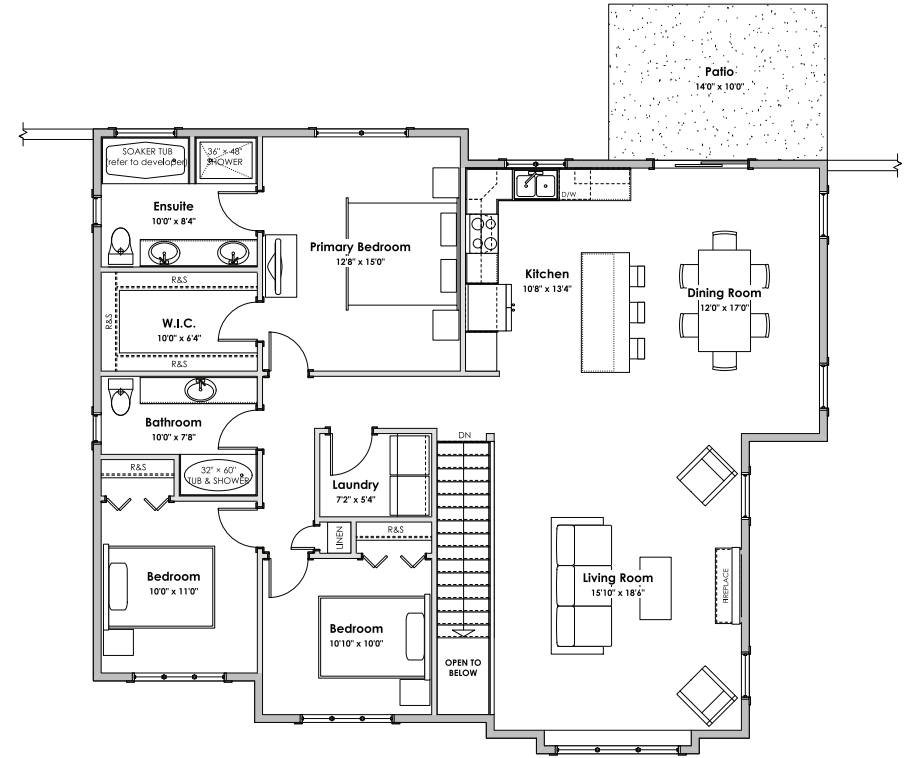
Helping you is what we do.

WESTVIEW



LOWER FLOOR

Primary: 419 sq.ft. Suite: 736 sq.ft.



MAIN FLOOR

Primary: 1639 sq.ft.



'Regatta' Westcoast - 2,794 sq. ft.

Westviewbc.ca

*NOTE: In the interest of maintaining high standards, the developer reserves the right to modify plans, specifications and design without prior notice. Drawings contained within are artist renderings only. Sizes and dimensions are approximate and may vary with actual plan and survey. Exterior style may change pending governing parties approval. Retaining wall location and types may vary and are subject to municipal, engineering or developer discretion. Subject to change without notice. Furniture as shown on plans are for layout purposes only and are not included in the sale.

LIVING AREA
Primary: 2058 sq.ft.
Suite: 736 sq.ft.
Total: 2794 sq.ft.

OTHER
Garage: 495 sq.ft.

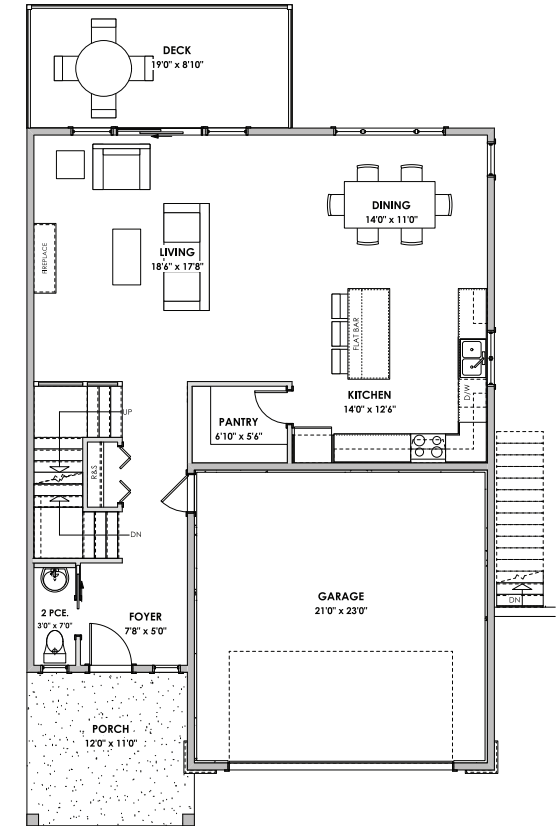
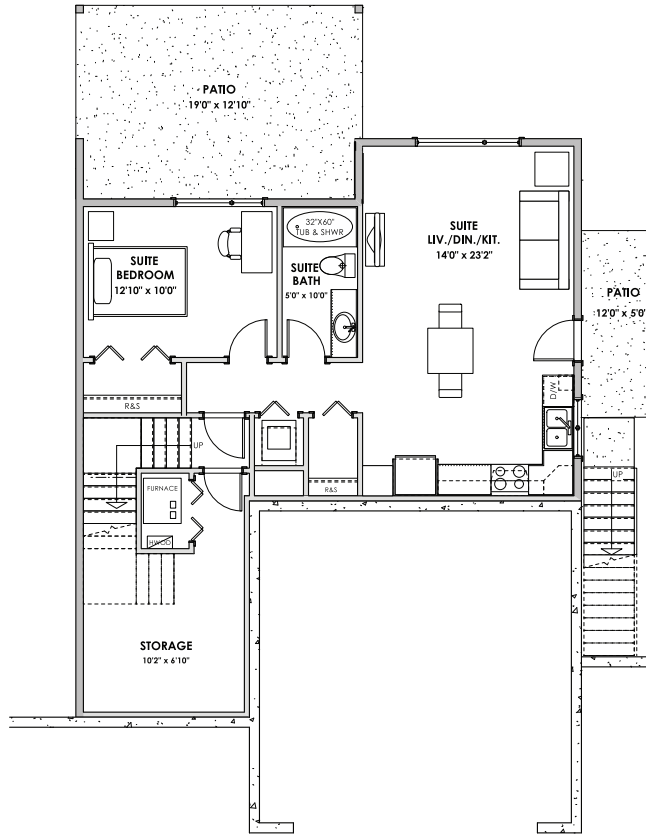
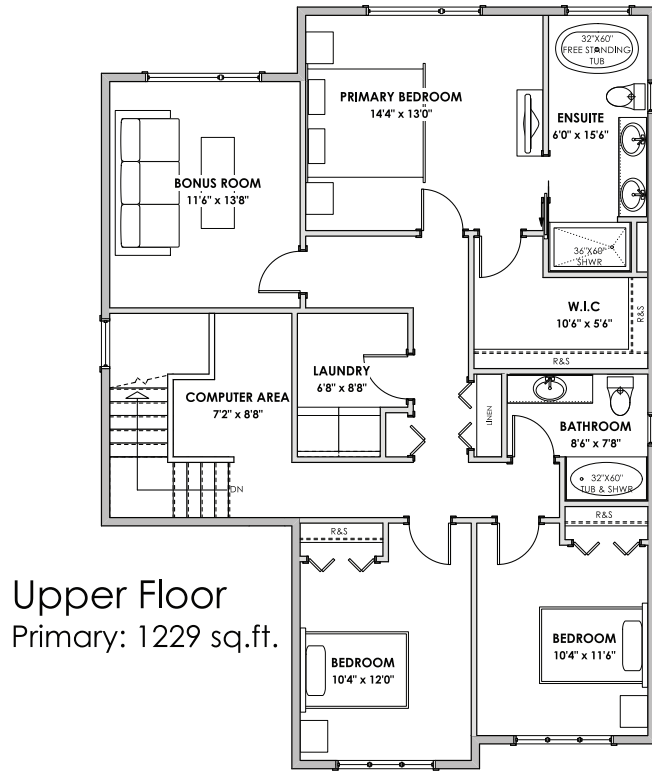
VERITY
CONSTRUCTION

QUALITY. CONSTRUCTION. TRUSTED SERVICE.

ROYAL LEPAGE

Helping you is what we do.™

WESTVIEW



'Sierra' Craftsman - 3,108 sq. ft.

Westviewbc.ca

*NOTE: In the interest of maintaining high standards, the developer reserves the right to modify plans, specifications and design without prior notice. Drawings contained within are artist renderings only. Sizes and dimensions are approximate and may vary with actual plan and survey. Exterior style may change pending governing parties approval. Retaining wall location and types may vary and are subject to municipal, engineering or developer discretion. Subject to change without notice. Furniture as shown on plans are for layout purposes only and are not included in the sale.

LIVING AREA
Primary: 2447 sq.ft.
Suite: 661 sq.ft.
Total: 3108 sq.ft.

OTHER
Garage: 484 sq.ft.

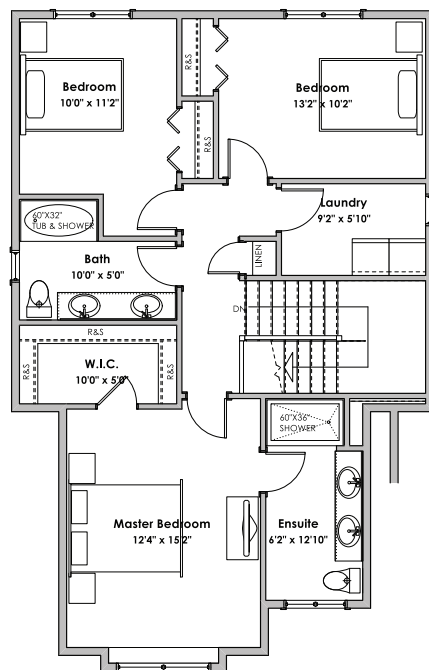
VERITY
CONSTRUCTION

QUALITY. CONSTRUCTION. TRUSTED SERVICE.

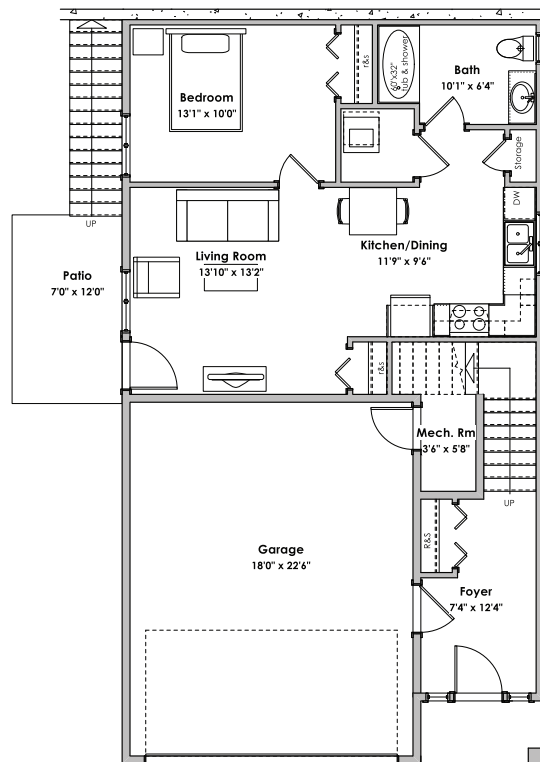
ROYAL LEPAGE

Helping you is what we do.

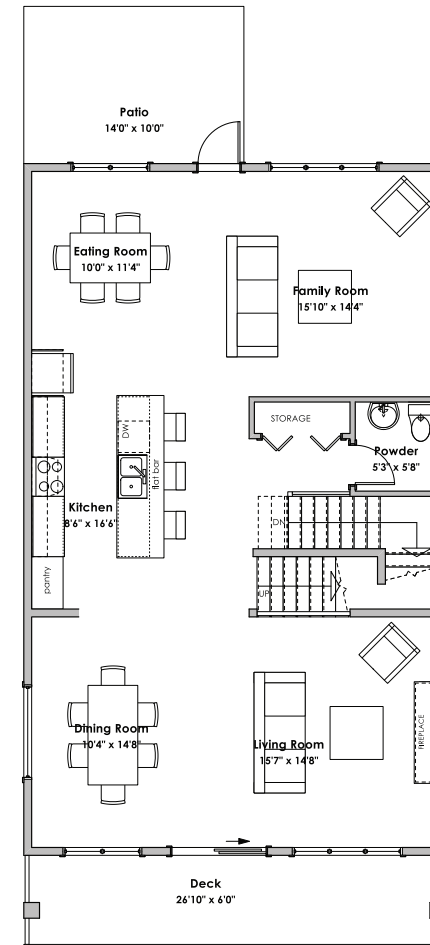
WESTVIEW



Upper Floor
972 sq.ft.



Lower Floor
Suite: 623 sq.ft.
Primary: 188 sq.ft.



Main Floor
1181 sq.ft.

LIVING AREA
 Primary: 2341 sq.ft.
 Suite: 623 sq.ft.
 Total: 2964 sq.ft.

OTHER
 Garage: 447 sq.ft.



'Summit' Craftsman - 2,964 sq. ft.

Westviewbc.ca

*NOTE: In the interest of maintaining high standards, the developer reserves the right to modify plans, specifications and design without prior notice. Drawings contained within are artist renderings only. Sizes and dimensions are approximate and may vary with actual plan and survey. Exterior style may change pending governing parties approval. Retaining wall location and types may vary and are subject to municipal, engineering or developer discretion. Subject to change without notice. Furniture as shown on plans are for layout purposes only and are not included in the sale.

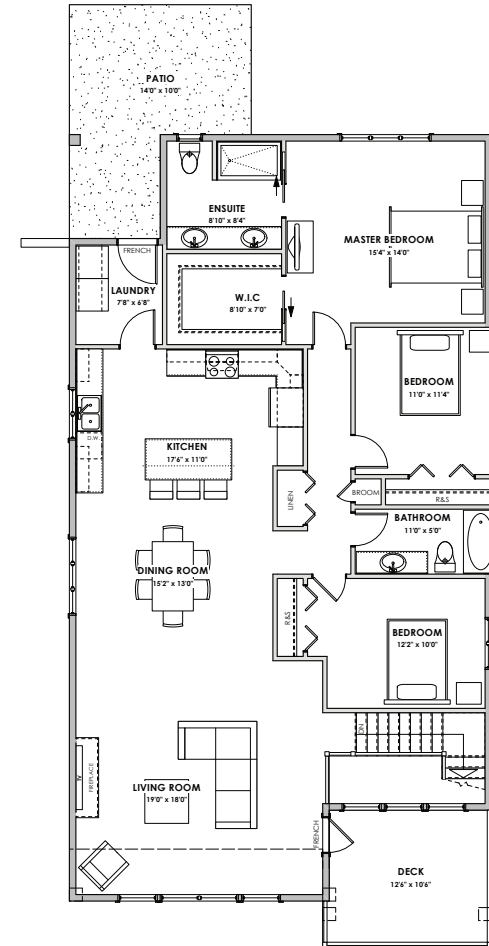
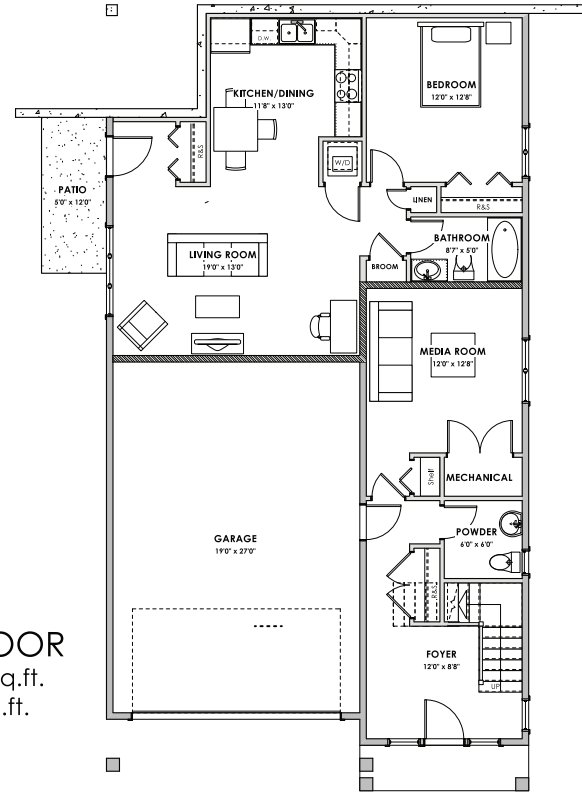
VERITY
 CONSTRUCTION

QUALITY. CONSTRUCTION. TRUSTED SERVICE.

ROYAL LEPAGE

Helping you is what we do.™

WESTVIEW



'Upland' Traditional - 2,939 sq. ft.

Westviewbc.ca

*NOTE: In the interest of maintaining high standards, the developer reserves the right to modify plans, specifications and design without prior notice. Drawings contained within are artist renderings only. Sizes and dimensions are approximate and may vary with actual plan and survey. Exterior style may change pending governing parties approval. Retaining wall location and types may vary and are subject to municipal, engineering or developer discretion. Subject to change without notice. Furniture as shown on plans are for layout purposes only and are not included in the sale.

LIVING AREA
 Primary: 2185 sq.ft.
 Suite: 754 sq.ft.
 Total: 2939 sq.ft.

OTHER
 Garage: 560 sq.ft.

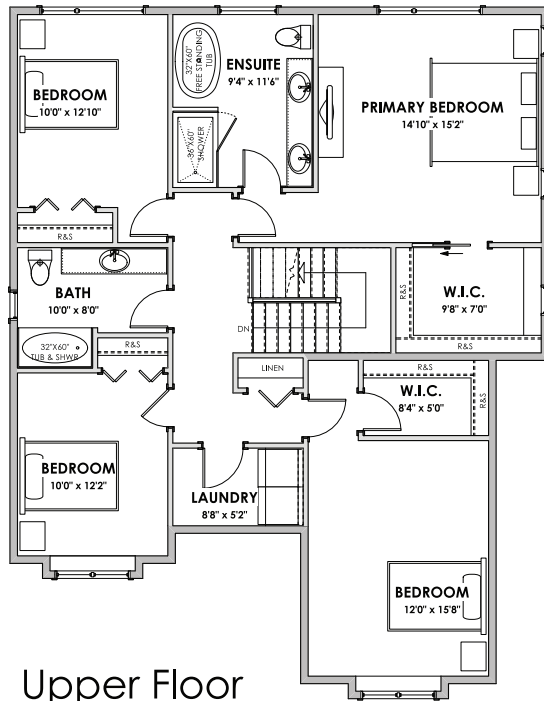
VERITY
 CONSTRUCTION

QUALITY. CONSTRUCTION. TRUSTED SERVICE.

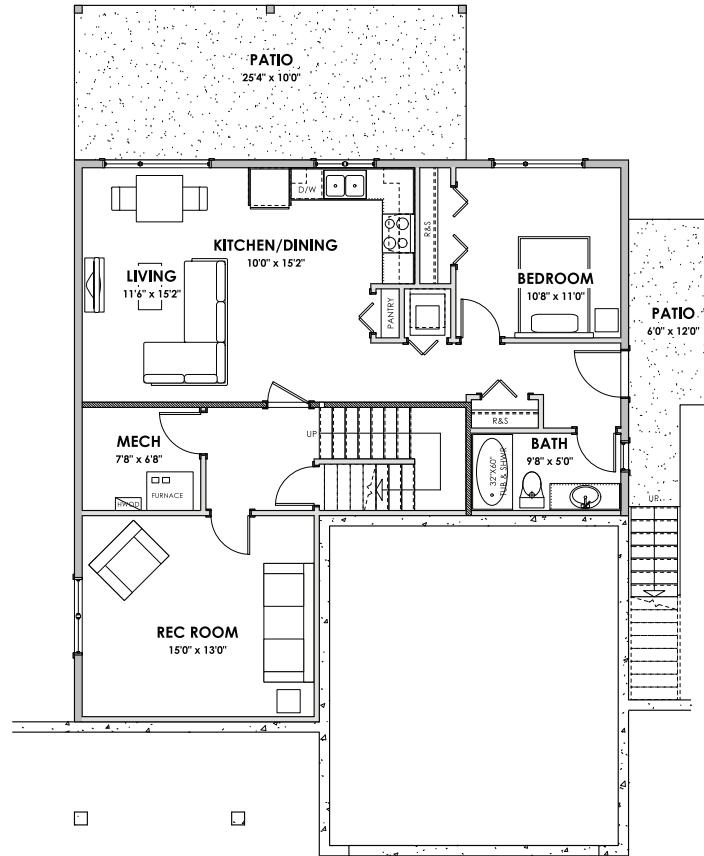
ROYAL LEPAGE

Helping you is what we do.

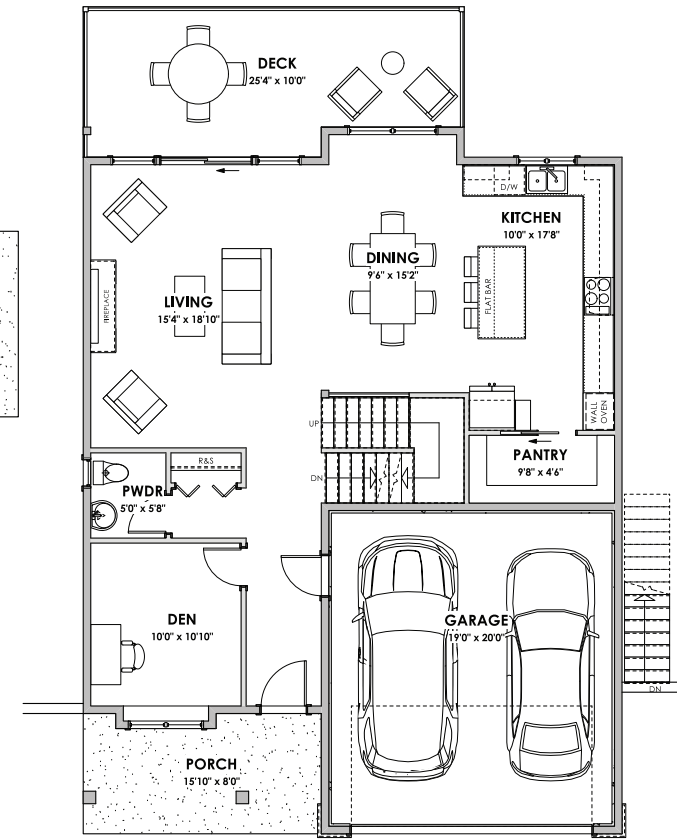
WESTVIEW



Upper Floor
Primary: 1302 sq.ft.



Lower Floor
Primary: 405 sq.ft.
Suite: 641 sq.ft.



Main Floor
Primary: 1065 sq.ft.
Garage: 440 sq.ft.

LIVING AREA
Primary: 2772 sq.ft.
Suite: 641 sq.ft.
Total: 3413 sq.ft.

OTHER
Garage: 440 sq.ft.



'Vale' Coastal - 3,413 sq. ft.

Westviewbc.ca

*NOTE: In the interest of maintaining high standards, the developer reserves the right to modify plans, specifications and design without prior notice. Drawings contained within are artist renderings only. Sizes and dimensions are approximate and may vary with actual plan and survey. Exterior style may change pending governing parties approval. Retaining wall location and types may vary and are subject to municipal, engineering or developer discretion. Subject to change without notice. Furniture as shown on plans are for layout purposes only and are not included in the sale.

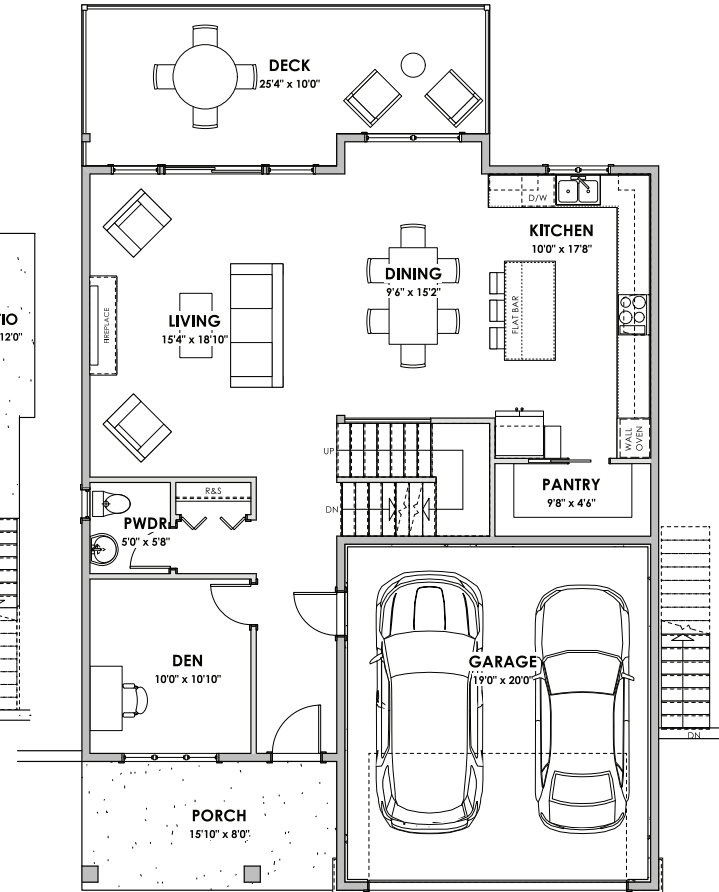
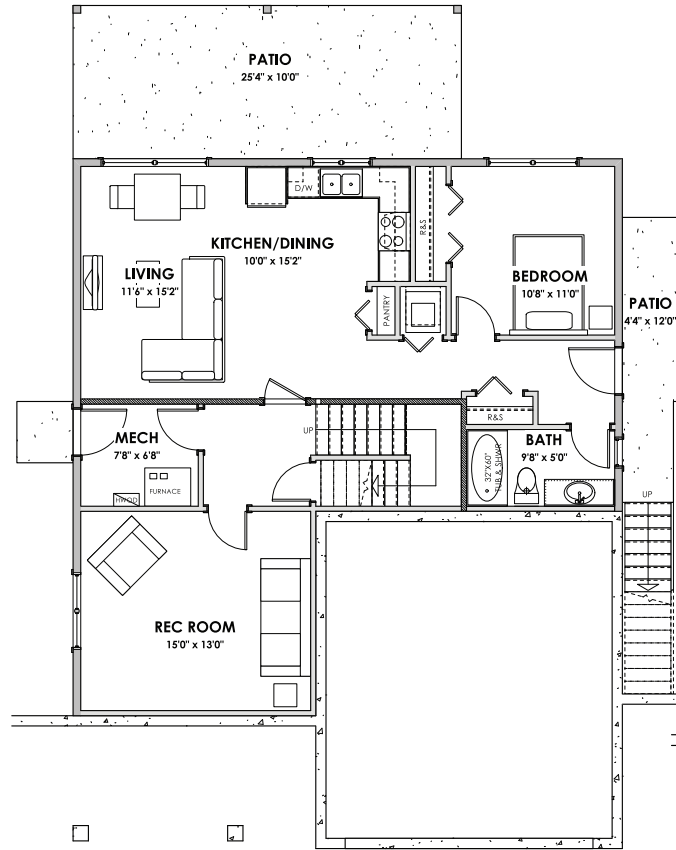
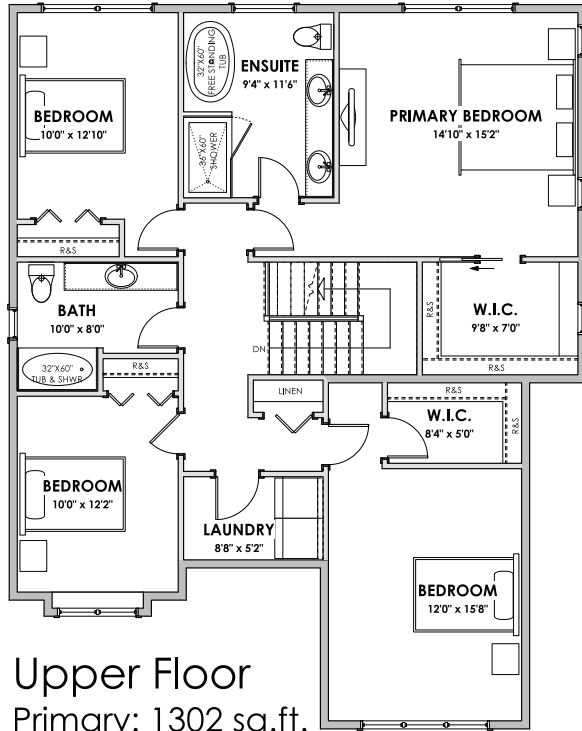
VERITY
CONSTRUCTION

QUALITY. CONSTRUCTION. TRUSTED SERVICE.

ROYAL LEPAGE

Helping you is what we do.

WESTVIEW



LIVING AREA	
Primary:	2772 sq.ft.
Suite:	641 sq.ft.
Total:	3413 sq.ft.
OTHER	
Garage:	440 sq.ft.

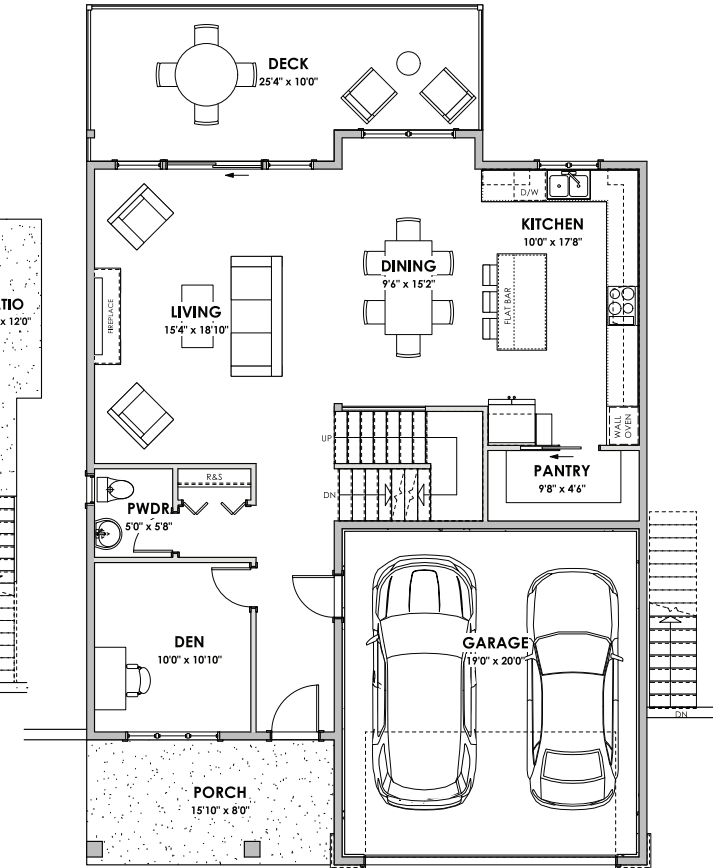
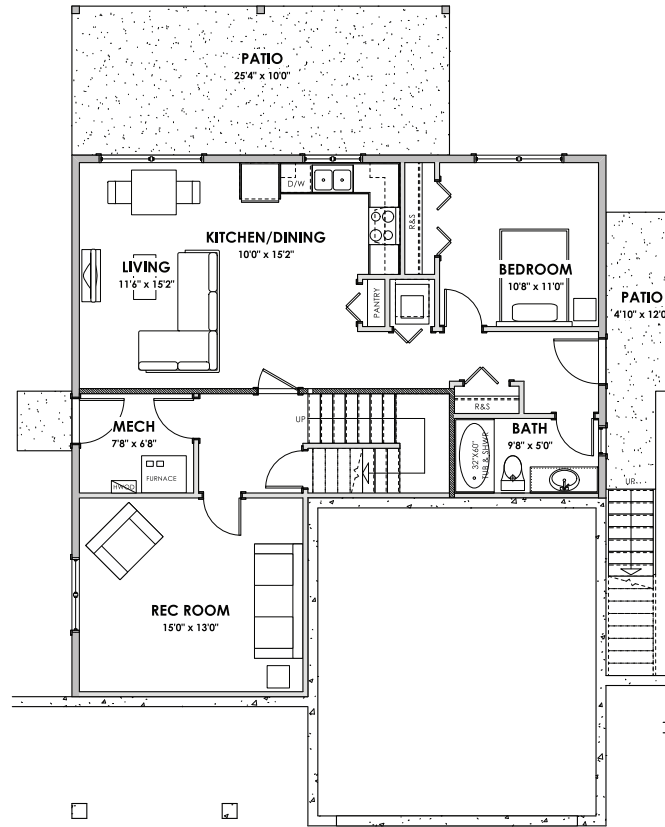
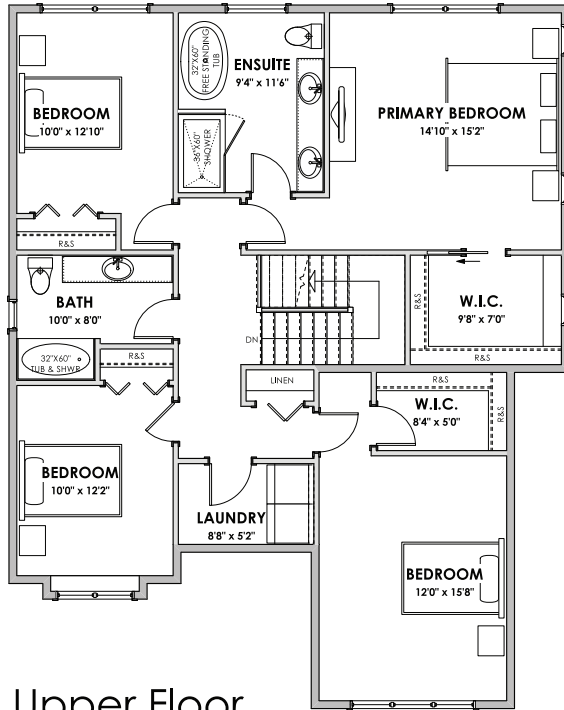


'Vale' Craftsman - 3,413 sq. ft.
Westviewbc.ca

*NOTE: In the interest of maintaining high standards, the developer reserves the right to modify plans, specifications and design without prior notice. Drawings contained within are artist renderings only. Sizes and dimensions are approximate and may vary with actual plan and survey. Exterior style may change pending governing parties approval. Retaining wall location and types may vary and are subject to municipal, engineering or developer discretion. Subject to change without notice. Furniture as shown on plans are for layout purposes only and are not included in the sale.



WESTVIEW



'Vale' Craftsman - 3,413 sq. ft.

Westviewbc.ca

*NOTE: In the interest of maintaining high standards, the developer reserves the right to modify plans, specifications and design without prior notice. Drawings contained within are artist renderings only. Sizes and dimensions are approximate and may vary with actual plan and survey. Exterior style may change pending governing parties approval. Retaining wall location and types may vary and are subject to municipal, engineering or developer discretion. Subject to change without notice. Furniture as shown on plans are for layout purposes only and are not included in the sale.

LIVING AREA
Primary: 2772 sq.ft.
Suite: 641 sq.ft.
Total: 3413 sq.ft.

OTHER
Garage: 440 sq.ft.

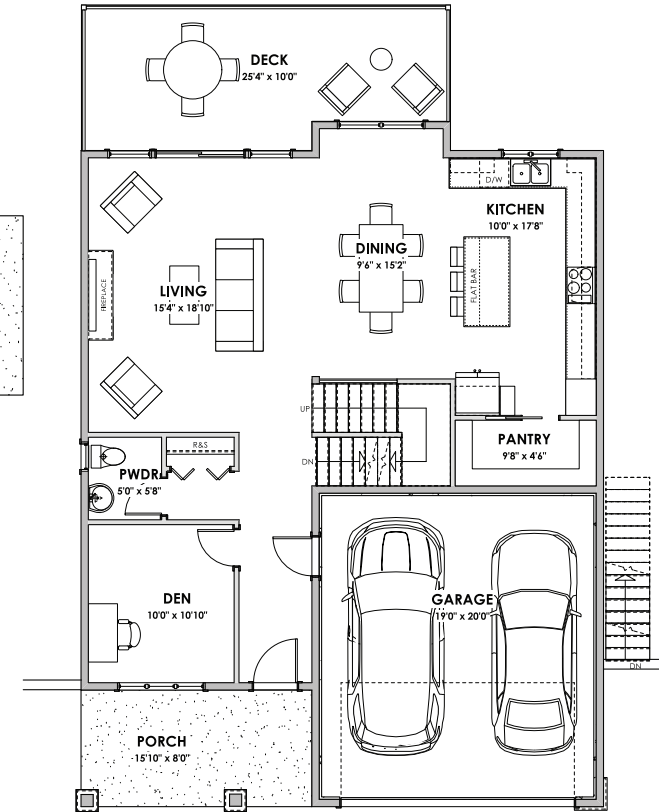
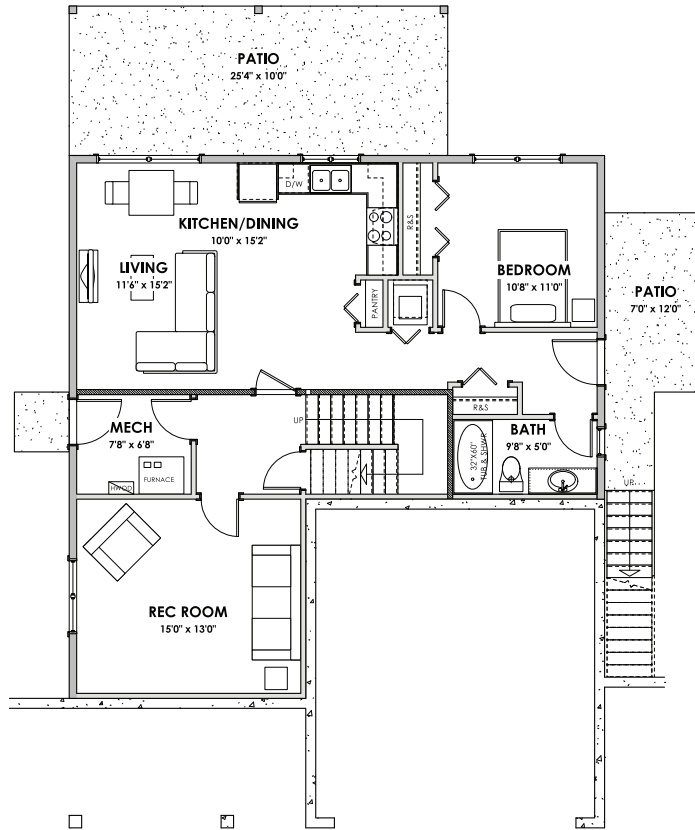
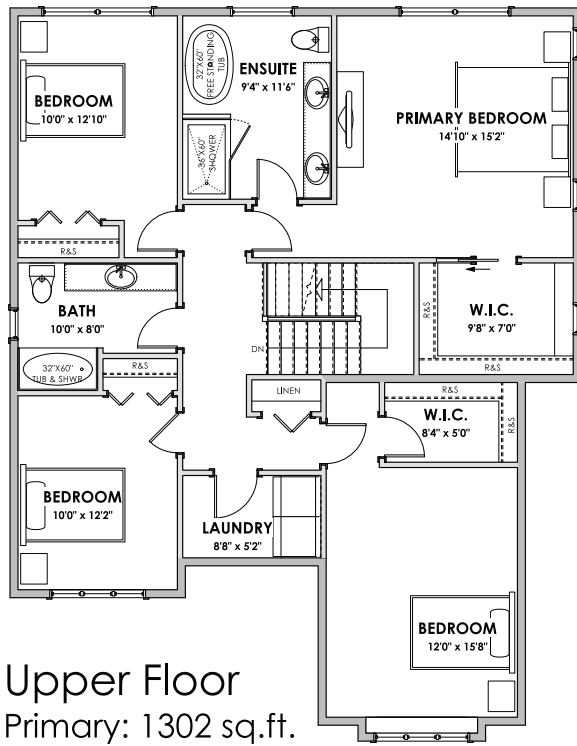
VERITY
CONSTRUCTION

QUALITY. CONSTRUCTION. TRUSTED SERVICE.

ROYAL LEPAGE

Helping you is what we do.™

WESTVIEW



LIVING AREA
Primary: 2772 sq.ft.
Suite: 641 sq.ft.
Total: 3413 sq.ft.

OTHER
Garage: 440 sq.ft.



'Vale' Traditional - 3,413 sq. ft.

Westviewbc.ca

*NOTE: In the interest of maintaining high standards, the developer reserves the right to modify plans, specifications and design without prior notice. Drawings contained within are artist renderings only. Sizes and dimensions are approximate and may vary with actual plan and survey. Exterior style may change pending governing parties approval. Retaining wall location and types may vary and are subject to municipal, engineering or developer discretion. Subject to change without notice. Furniture as shown on plans are for layout purposes only and are not included in the sale.

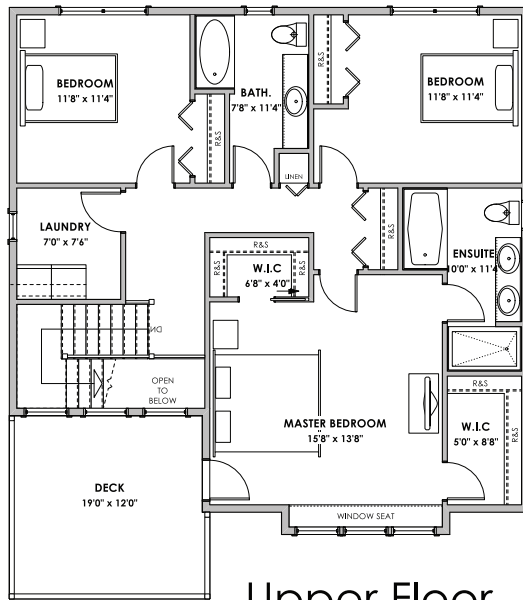
VERITY
CONSTRUCTION

QUALITY. CONSTRUCTION. TRUSTED SERVICE.

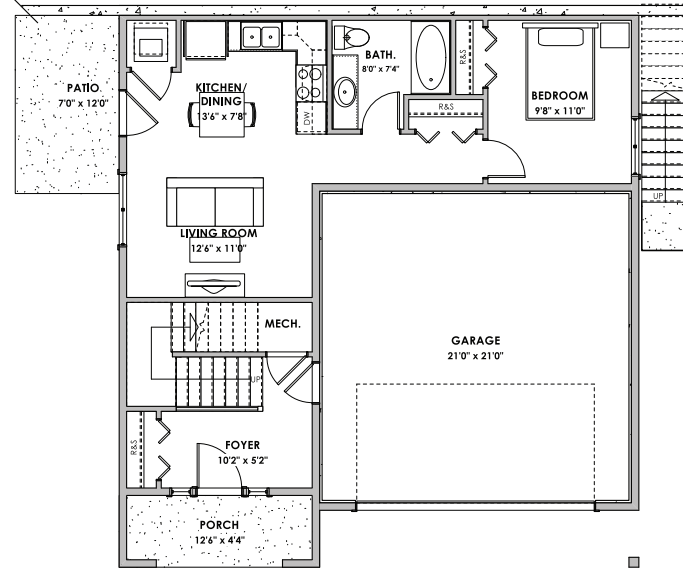
ROYAL LEPAGE

Helping you is what we do.

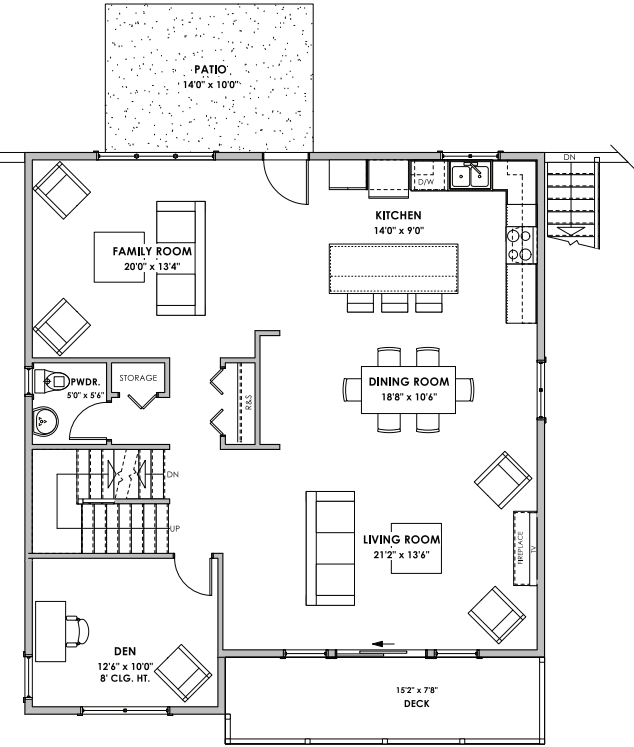
WESTVIEW



Upper Floor
1038 sq.ft.



Lower Floor
Suite: 522 sq.ft.
Primary: 171 sq.ft.



Main Floor
1174 sq.ft.



LIVING AREA
Primary: 2383 sq.ft.
Suite: 522 sq.ft.
Total: 2905 sq.ft.

OTHER
Garage: 484 sq.ft.

'Vista' Coastal - 2,905 sq. ft.

Westviewbc.ca

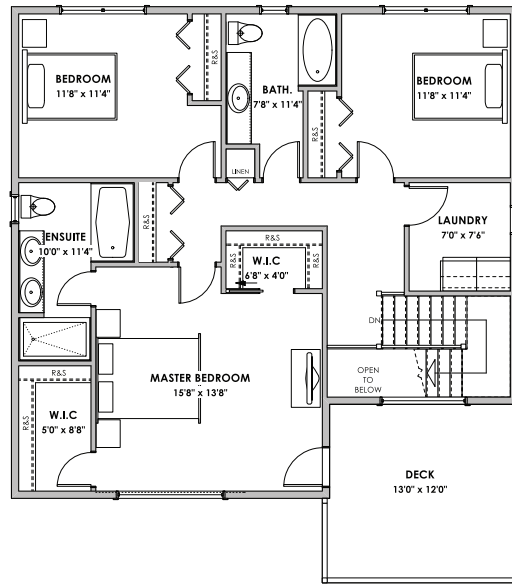
*NOTE: In the interest of maintaining high standards, the developer reserves the right to modify plans, specifications and design without prior notice. Drawings contained within are artist renderings only. Sizes and dimensions are approximate and may vary with actual plan and survey. Exterior style may change pending governing parties approval. Retaining wall location and types may vary and are subject to municipal, engineering or developer discretion. Subject to change without notice. Furniture as shown on plans are for layout purposes only and are not included in the sale.

VERITY
CONSTRUCTION
QUALITY. CONSTRUCTION. TRUSTED SERVICE.

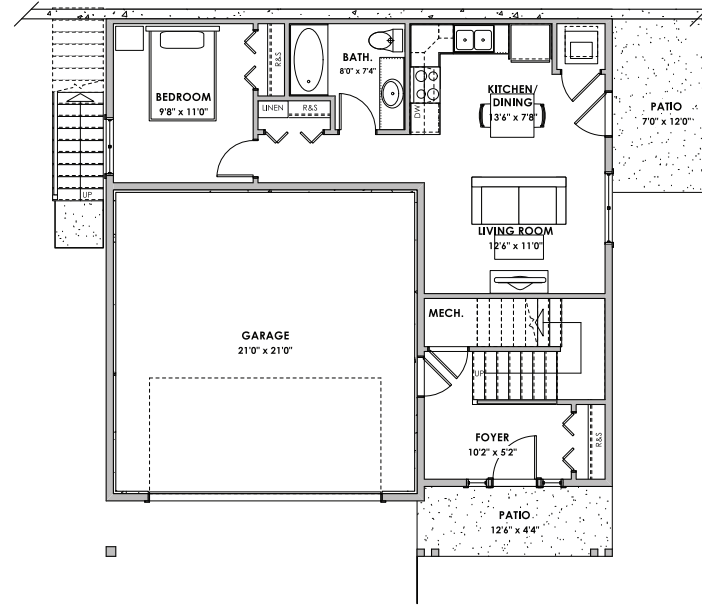
ROYAL LEPAGE

Helping you is what we do.™

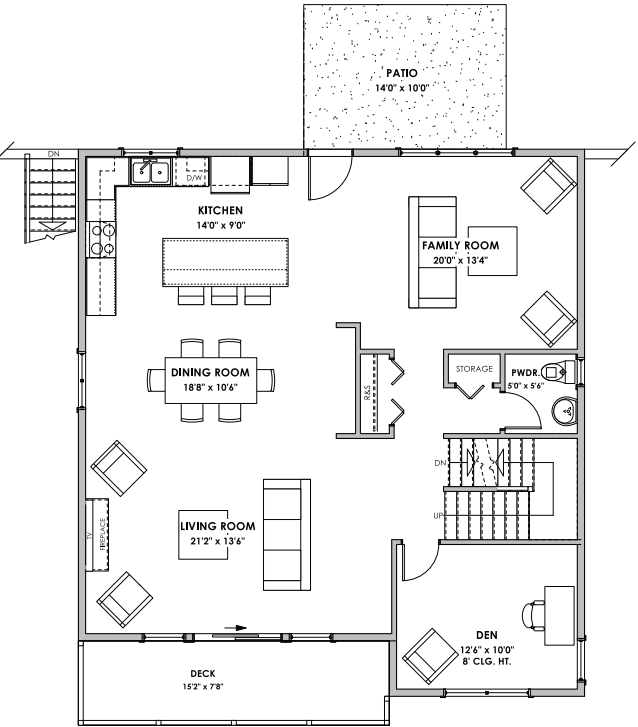
WESTVIEW



Upper Floor
1021 sq.ft.



Lower Floor
Suite: 522 sq.ft.
Primary: 171 sq.ft.



Main Floor
1174 sq.ft.



LIVING AREA
Primary: 2366 sq.ft.
Suite: 522 sq.ft.
Total: 2888 sq.ft.

OTHER
Garage: 484 sq.ft.

'Vista' Westcoast - 2,888 sq. ft.

Westviewbc.ca

*NOTE: In the interest of maintaining high standards, the developer reserves the right to modify plans, specifications and design without prior notice. Drawings contained within are artist renderings only. Sizes and dimensions are approximate and may vary with actual plan and survey. Exterior style may change pending governing parties approval. Retaining wall location and types may vary and are subject to municipal, engineering or developer discretion. Subject to change without notice. Furniture as shown on plans are for layout purposes only and are not included in the sale.

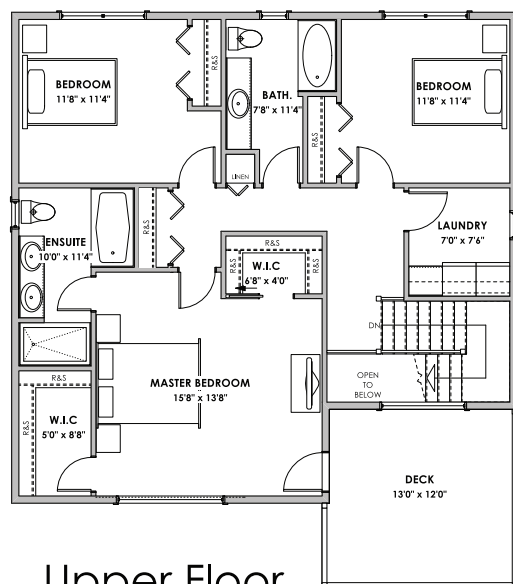
VERITY
CONSTRUCTION

QUALITY. CONSTRUCTION. TRUSTED SERVICE.

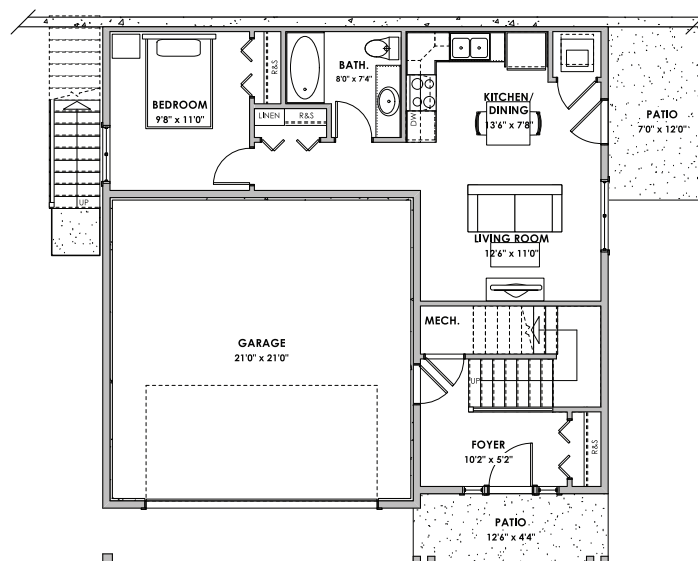
ROYAL LEPAGE

Helping you is what we do.

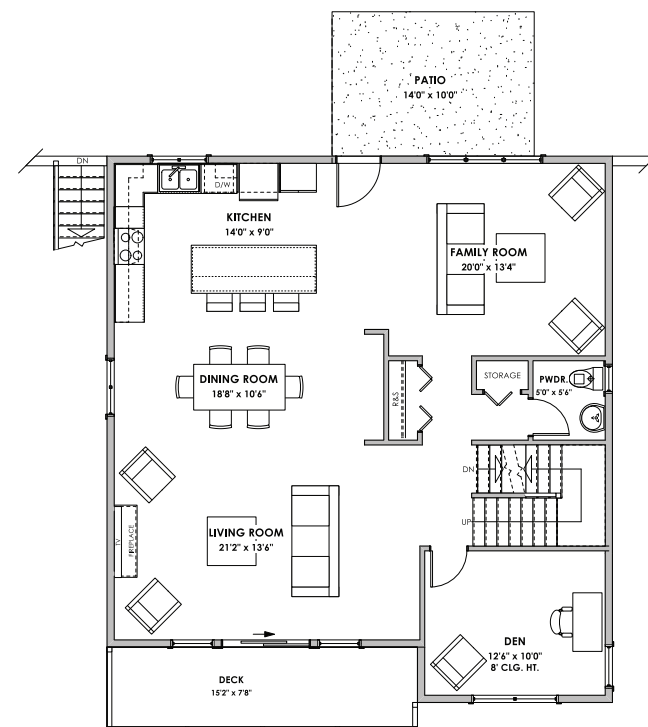
WESTVIEW



Upper Floor
1021 sq.ft.



Lower Floor
Suite: 522 sq.ft.
Primary: 171 sq.ft.



Main Floor
1174 sq.ft.



LIVING AREA
Primary: 2366 sq.ft.
Suite: 522 sq.ft.
Total: 2888 sq.ft.

OTHER
Garage: 484 sq.ft.

'Vista' Westcoast - 2,888 sq. ft.

Westviewbc.ca

*NOTE: In the interest of maintaining high standards, the developer reserves the right to modify plans, specifications and design without prior notice. Drawings contained within are artist renderings only. Sizes and dimensions are approximate and may vary with actual plan and survey. Exterior style may change pending governing parties approval. Retaining wall location and types may vary and are subject to municipal, engineering or developer discretion. Subject to change without notice. Furniture as shown on plans are for layout purposes only and are not included in the sale.

VERITY
CONSTRUCTION
QUALITY. CONSTRUCTION. TRUSTED SERVICE.

ROYAL LEPAGE

Helping you is what we do.