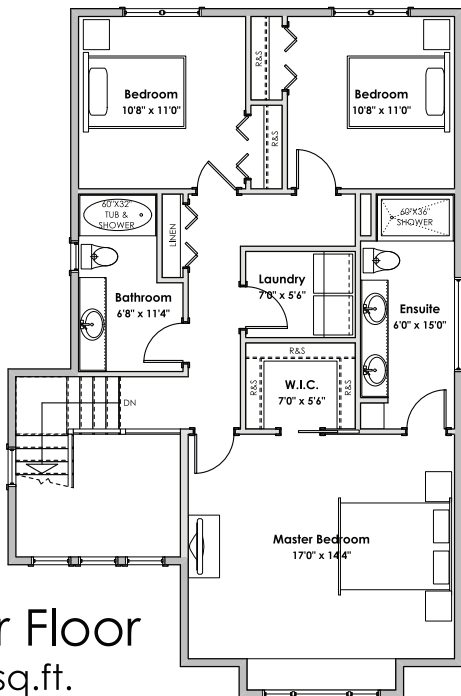
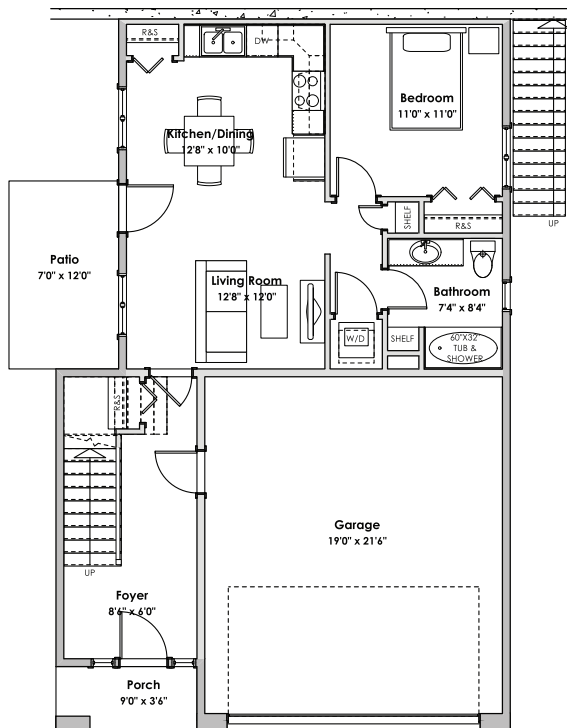


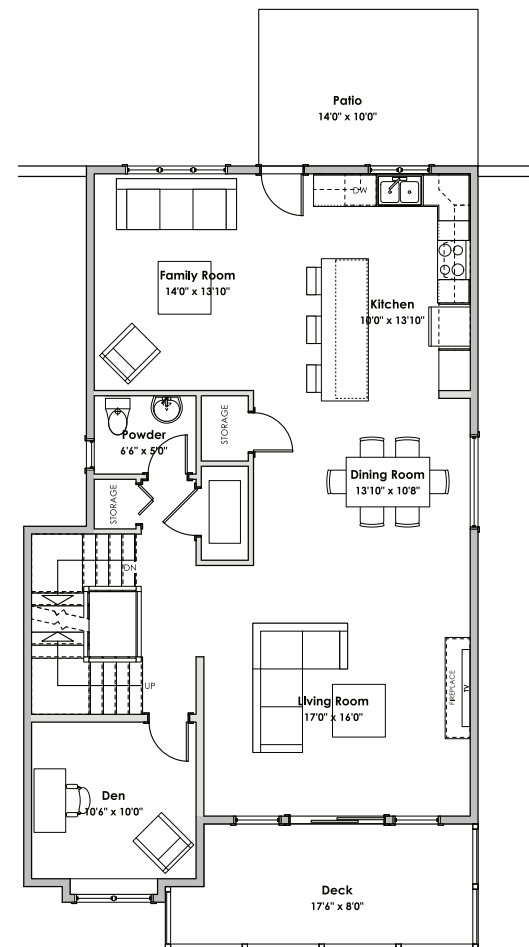
# WESTVIEW



Upper Floor  
935 sq.ft.



Lower Floor  
Suite: 576 sq.ft.  
Primary: 170 sq.ft.



Main Floor  
1088 sq.ft.

LIVING AREA  
Primary: 2193 sq.ft.  
Suite: 576 sq.ft.  
Total: 2769 sq.ft.

OTHER  
Garage: 450 sq.ft.



## 'Meridian' Traditional - 2,769 sq. ft.

[Westviewbc.ca](http://Westviewbc.ca)

\*NOTE: In the interest of maintaining high standards, the developer reserves the right to modify plans, specifications and design without prior notice. Drawings contained within are artist renderings only. Sizes and dimensions are approximate and may vary with actual plan and survey. Exterior style may change pending governing parties approval. Retaining wall location and types may vary and are subject to municipal, engineering or developer discretion. Subject to change without notice.

Furniture as shown on plans are for layout purposes only and are not included in the sale.

**VERITY**  
CONSTRUCTION

QUALITY. CONSTRUCTION. TRUSTED SERVICE.

**ROYAL LEPAGE**

Helping you is what we do.™