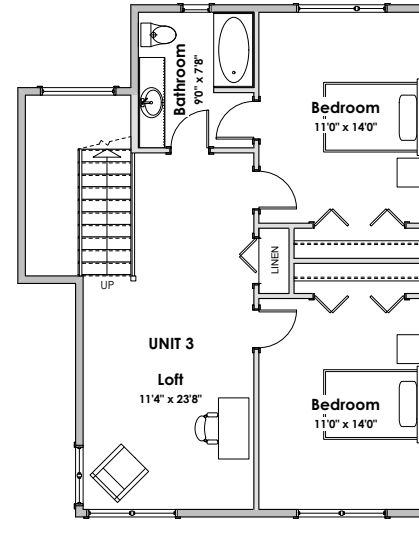


MAIN



UPPER

WESTVIEW PHASE 3

Obsidian Townhomes

2576 Obsidian Place

MAIN FLOOR

Total: 1083 sq. ft.

UPPER FLOOR

Total: 733 sq. ft.

LIVING AREA

Primary: 1816 sq. ft.

OTHER

Garage: 437 sq. ft.



Mike Hartshorne* | 250-474-4800 | Westviewbc.ca

South Island Home Team, Royal LePage Coast Capital Realty



*NOTE: In the interest of maintaining high standards, the developer reserves the right to modify plans, specifications and design without prior notice. Drawings contained within are artist renderings only. Sizes and dimensions are approximate and may vary with actual plan and survey. Exterior style may change pending governing parties approval. Retaining wall location and types may vary and are subject to municipal, engineering or developer discretion. Subject to change without notice. *Personal Real Estate Corporation.

