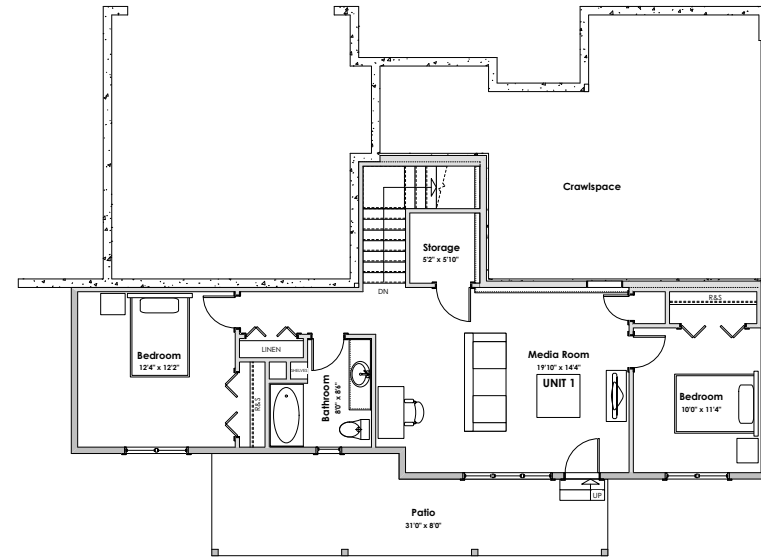


MAIN



LOWER

WESTVIEW PHASE 3
Obsidian Townhomes
2576 Obsidian Place

MAIN FLOOR

Total: 1397 sq. ft.

LOWER FLOOR

Total: 861 sq. ft.

LIVING AREA

Primary: 2258 sq. ft.

OTHER

Garage: 440 sq. ft.



Mike Hartshorne* | 250-474-4800 | Westviewbc.ca

South Island Home Team, Royal LePage Coast Capital Realty



*NOTE: In the interest of maintaining high standards, the developer reserves the right to modify plans, specifications and design without prior notice. Drawings contained within are artist renderings only. Sizes and dimensions are approximate and may vary with actual plan and survey. Exterior style may change pending governing parties approval. Retaining wall location and types may vary and are subject to municipal, engineering or developer discretion. Subject to change without notice. *Personal Real Estate Corporation.

