



# WESTVIEW

SITE PLAN, FEATURES & FLOOR PLANS



south island  
HOME TEAM



Helping you is what we do.™

Mike Hartshorne\*\* | 250-474-4800 | [WestviewBC.ca](http://WestviewBC.ca)

\*NOTE: In the interest of maintaining high standards, the developer reserves the right to modify plans, specifications and design without prior notice. Drawings contained within are artist renderings only. Sizes and dimensions are approximate and may vary with actual plan and survey. Exterior style may change pending governing parties approval. Retaining wall location and types may vary and are subject to municipal, engineering or developer discretion. Subject to change without notice. \*\*Personal Real Estate Corporation.



# WESTVIEW



Helping you is what we do.

Mike Hartshorne\*\* | 250-474-4800 | [Westviewbc.ca](http://Westviewbc.ca)



QUALITY. CONSTRUCTION. TRUSTED SERVICE.

\*NOTE: In the interest of maintaining high standards, the developer reserves the right to modify plans, specifications and design without prior notice. Drawings contained within are artist renderings only. Sizes and dimensions are approximate and may vary with actual plan and survey. Exterior style may change pending governing parties approval. Retaining wall location and types may vary and are subject to municipal, engineering or developer discretion. Subject to change without notice. \*\*Personal Real Estate Corporation.



# WESTVIEW PHASE 3 - Single Family Homes



## INSPIRED INTERIORS

- Two colour scheme options designed by Dawn Garneau of Award Winning Nygaard Interior Designs
- High volume, 9ft tall ceilings on main floor
- Stylish and discrete 2" urban faux wood collection blinds
- Durable, dyed carpeting with 15 year warranty in bedrooms and family/rec/bonus room\*\*
- High quality laminate flooring; environmentally friendly and carries 25 years warranty, on main floor including entry, kitchen dining living, and powder room and hallways
- Quality trim package throughout the home
- Large windows for plenty of natural light
- Sleek, Napoleon Ascent 36" gas fireplace with blower fan
- Painted artisan solid wood banister and railings\*\*
- LED lighting in the bedrooms, halls, laundry, walk in closet and living room
- Custom wood organizer in master bedroom walk in closet
- Convenient wire shelving in bedroom closets and pantry\*\*
- Built Green Certified

## EASY LIVING

- Energy Star high efficiency modulating gas furnace with programable thermostat with air conditioning rough in, providing you year-round comfort
- Hot water on demand with recirculation line to deliver hot water to faucets quickly which conserve water and energy
- Fridge water line connected
- Standard rough in for gas range and BBQ outlet
- Fiber Optic telecommunications network connected to a smart panel
- Cable and telephone in living room and master bedroom
- Soffit plugs for Christmas lights
- Exterior weatherproof plugs
- Carbon monoxide & direct wire smoke detectors as per BC Building Code
- 200 AMP service
- Pantry\*\*, walk-in closet and laundry room include motion activated lights

## GOURMET KITCHENS

- Your choice of 2 options of durable quartz countertops with tiled backsplash
- Black pulldown faucet with Power Clean technology
- Stylish pendant fixture over kitchen island
- Sleek undercabinet LED puck lights
- Cabinet doors and sliding drawers with soft-close hardware
- Undermount 18-gauge stainless steel sink
- Premium stainless-steel appliance package including:
  - o 4 Element Slide-In Electric Range
  - o Energy Star refrigerator
  - o Energy Star dishwasher with touch control
  - o Inverter Stainless Steel Microwave Oven

## BEAUTIFUL BATHROOMS

- Elegant quartz countertop in all bathrooms
- Luxurious tile flooring in the ensuite and main bathroom
- Decorative polished chrome towel bars and paper holders
- Soft close toilet seats in the main house

## LAUNDRY

- Dedicated laundry room\*\*
- Front-load dryer and Energy Star washer
- Laminate countertop above laundry appliances \*\*
- Main house laundry with tile flooring

\*\* if applicable

Some homes may include a sewer grinder pump in the lower floor

IN THE EVENT OF SHIPPING DELAYS OR DISCONTINUED PRODUCTS AND TO MAINTAIN HIGH STANDARDS, THE DEVELOPER RESERVES THE RIGHT TO MODIFY PLANS, SPECIFICATIONS AND DESIGN WITHOUT PRIOR NOTICE.



Helping you is what we do.™

## Features - October 12th, 2021

Mike Hartshorne\*\* | 250-474-4800 | [Westviewbc.ca](https://www.westviewbc.ca)



\*NOTE: In the interest of maintaining high standards, the developer reserves the right to modify plans, specifications and design without prior notice. Drawings contained within are artist renderings only. Sizes and dimensions are approximate and may vary with actual plan and survey. Exterior style may change pending governing parties approval. Retaining wall location and types may vary and are subject to municipal, engineering or developer discretion. Subject to change without notice. \*\*Personal Real Estate Corporation.

# WESTVIEW PHASE 3 - Single Family Homes



## CURB APPEAL

- Multi-level homes with double garages
- Private and easy-care yards\*
- Large oversized decks with aluminum railings and patios on all homes for outdoor living\*\*
- Pre-coloured fibre cement exterior siding, carrying a 15 year warranty
- Cultured Stone Accents\*\*
- Energy efficient double-glazed vinyl windows with argon gas
- 30 year warranty laminated fiberglass roofing shingle system with R-40 roof insulation
- Concrete driveways
- Two remote control devices for automatic garage door access
- Professionally landscaped yards with in-ground irrigation\*
- R-20 wall with 6 mil. polyurethane and acoustical sealant for your comfort
- Wall and ceilings of garages are insulated, drywalled and painted
- Cedar panel rear and side fencing included\*

## SUITES\*\*

- One onsite parking space
- Laminate flooring in the main living areas and carpet in bedroom(s)
- Linoleum in bathroom and laundry
- Quartz countertops in the kitchen & bathrooms
- Inclusive Energy Star appliance package (stainless steel):
  - o Electric ceramic top range
  - o Fridge with freezer
  - o Energy Star dishwasher with touch control\*\*
  - o Hood fan
  - o Electric stacked laundry center
- Cable and telephone in living room

## PEACE OF MIND

Verity Construction's Homeowner Support

- Multiple Award-Winning Company, including Best Customer Service, Built Green Builder of the Year; and too many more to list - please visit our website for more information
- After framing, each home will have a rough-in walk through and lot orientation on-site
- Final walk-through prior to occupancy
- In-house customer service department
- Emergency service support

## WARRANTY

Travelers' 2-5-10 New Home Warranty

- 2 year materials and labour warranty
- 5 year building envelope warranty
- 10 year structural defects warranty

\*\* if applicable

Some homes may include a sewer grinder pump in the lower floor

- \* Fencing will be provided as close to the property line as site conditions permit, as determined by the Developer  
Cedar panel rear and side fencing up to the rear corner of the house are included; gates and panels to fully enclosed yards are available as an upgrade

IN THE EVENT OF SHIPPING DELAYS OR DISCONTINUED PRODUCTS AND TO MAINTAIN HIGH STANDARDS, THE DEVELOPER RESERVES THE RIGHT TO MODIFY PLANS, SPECIFICATIONS AND DESIGN WITHOUT PRIOR NOTICE.



Helping you is what we do.™

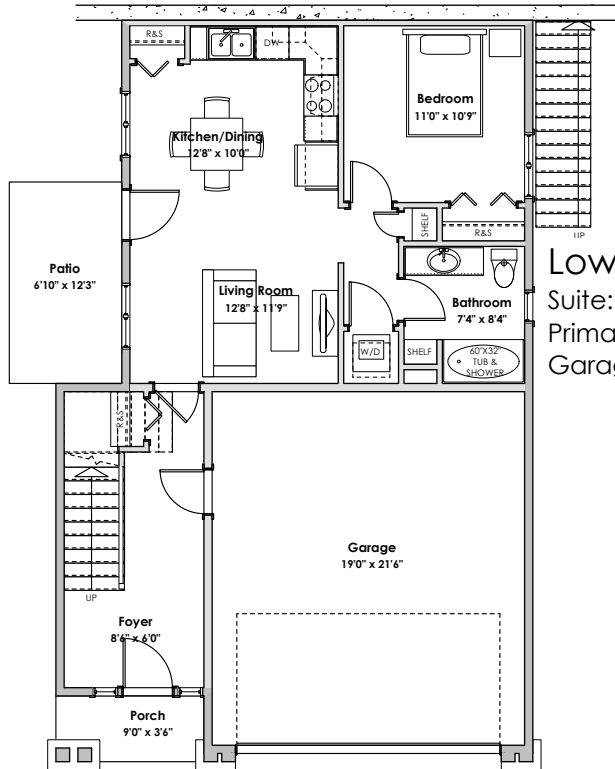
## Features - October 12th, 2021

Mike Hartshorne\*\* | 250-474-4800 | [Westviewbc.ca](https://www.westviewbc.ca)



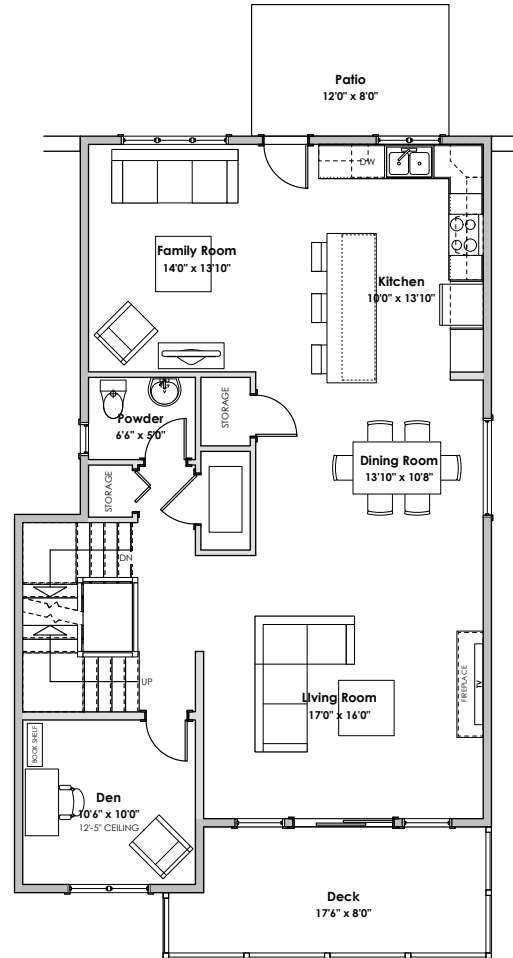
\*NOTE: In the interest of maintaining high standards, the developer reserves the right to modify plans, specifications and design without prior notice. Drawings contained within are artist renderings only. Sizes and dimensions are approximate and may vary with actual plan and survey. Exterior style may change pending governing parties approval. Retaining wall location and types may vary and are subject to municipal, engineering or developer discretion. Subject to change without notice. \*\*Personal Real Estate Corporation.

# WESTVIEW



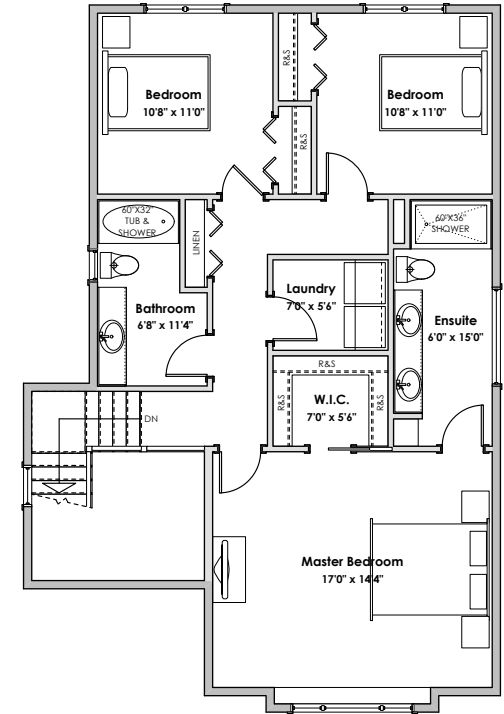
## Lower Floor

Suite: 576 sq. ft.  
Primary: 170 sq. ft.  
Garage: 450 sq. ft.



## Main Floor

Primary: 1088 sq. ft.



## Upper Floor

Primary: 935 sq. ft.



## LIVING AREA

Primary: 2193 sq. ft.  
Suite: 576 sq. ft.  
Total: 2769 sq. ft.

## OTHER

Garage: 450 sq. ft.

'Meridian' Traditional - 2,769 sq. ft.

[Westviewbc.ca](http://Westviewbc.ca)

\*NOTE: In the interest of maintaining high standards, the developer reserves the right to modify plans, specifications and design without prior notice. Drawings contained within are artist renderings only. Sizes and dimensions are approximate and may vary with actual plan and survey. Exterior style may change pending governing parties approval. Retaining wall location and types may vary and are subject to municipal, engineering or developer discretion. Subject to change without notice.

Furniture as shown on plans are for layout purposes only and are not included in the sale.

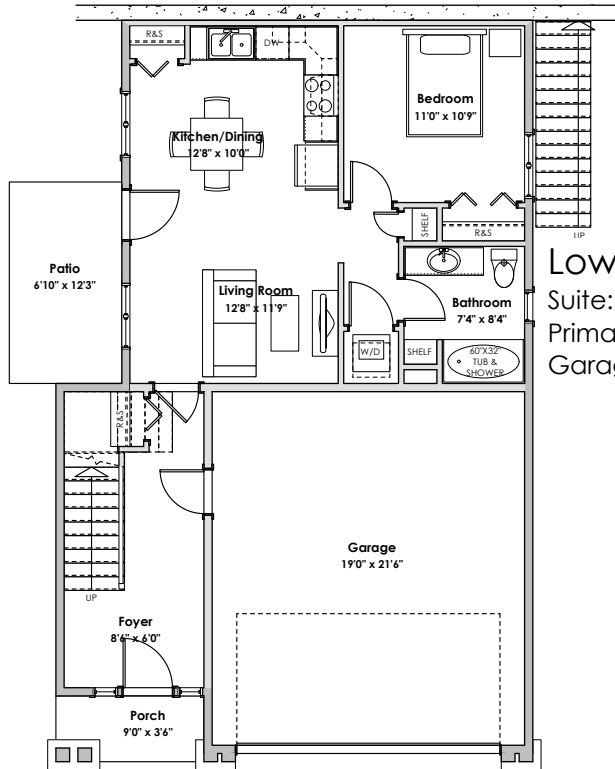
**VERITY**  
CONSTRUCTION

QUALITY. CONSTRUCTION. TRUSTED SERVICE.

**ROYAL LEPAGE**

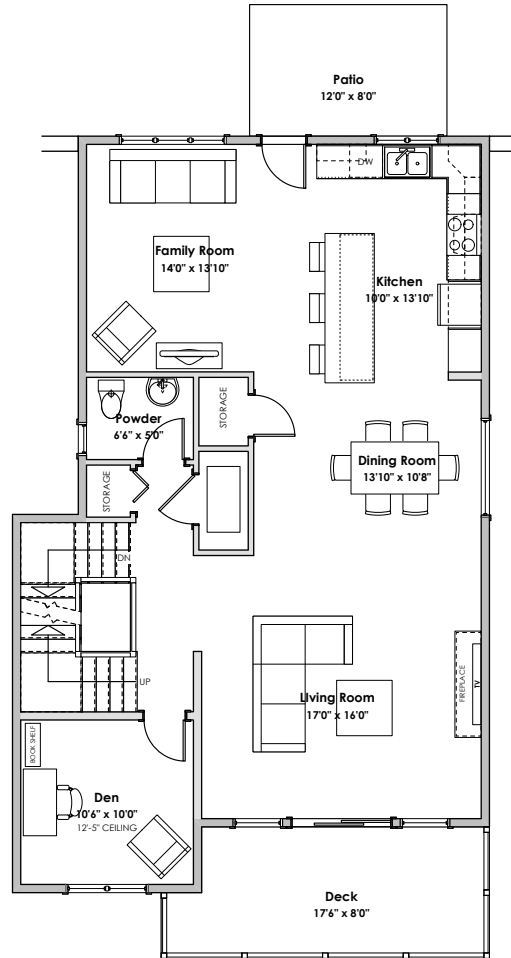
Helping you is what we do.™

# WESTVIEW



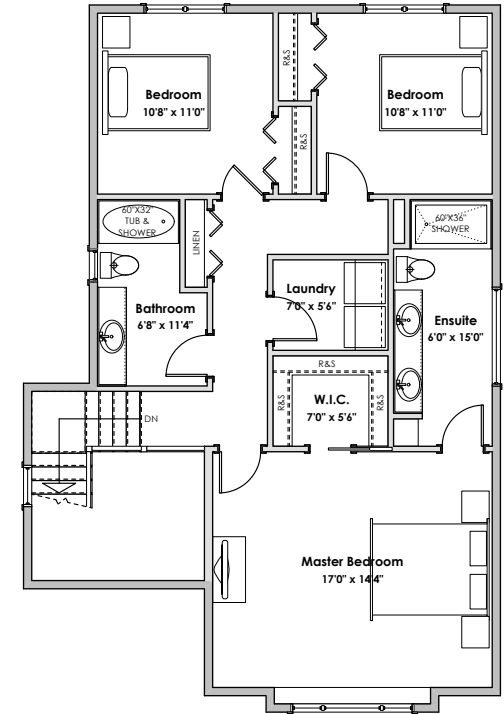
## Lower Floor

Suite: 576 sq. ft.  
Primary: 170 sq. ft.  
Garage: 450 sq. ft.



## Main Floor

Primary: 1088 sq. ft.



## Upper Floor

Primary: 935 sq. ft.



### LIVING AREA

Primary: 2193 sq. ft.  
Suite: 576 sq. ft.  
Total: 2769 sq. ft.

### OTHER

Garage: 450 sq. ft.

'Meridian' Westcoast - 2,769 sq. ft.

[Westviewbc.ca](http://Westviewbc.ca)

\*NOTE: In the interest of maintaining high standards, the developer reserves the right to modify plans, specifications and design without prior notice. Drawings contained within are artist renderings only. Sizes and dimensions are approximate and may vary with actual plan and survey. Exterior style may change pending governing parties approval. Retaining wall location and types may vary and are subject to municipal, engineering or developer discretion. Subject to change without notice.

Furniture as shown on plans are for layout purposes only and are not included in the sale.

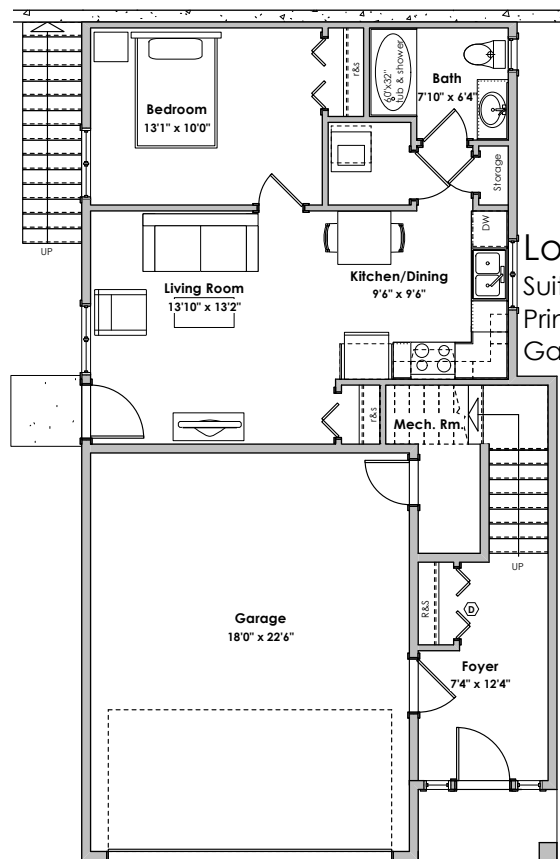
**VERITY**  
CONSTRUCTION

QUALITY. CONSTRUCTION. TRUSTED SERVICE.

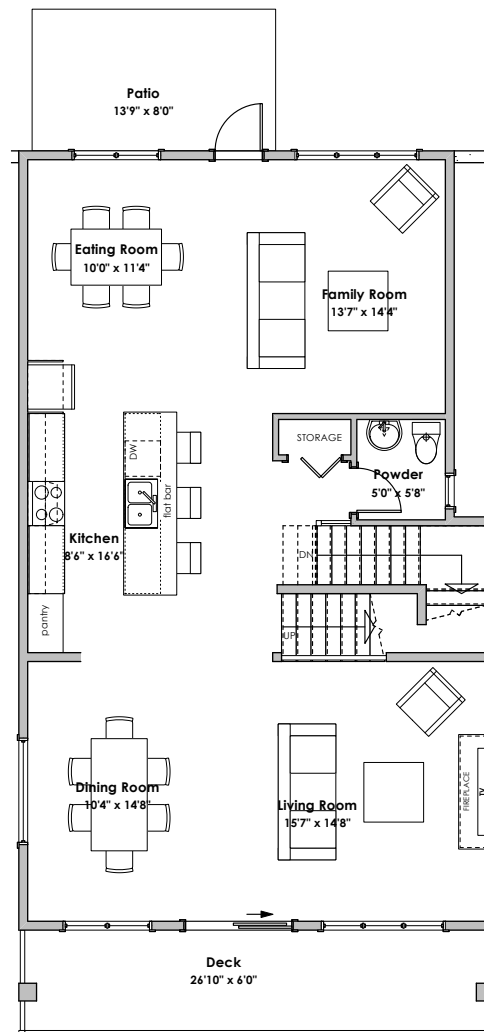
**ROYAL LEPAGE**

Helping you is what we do.™

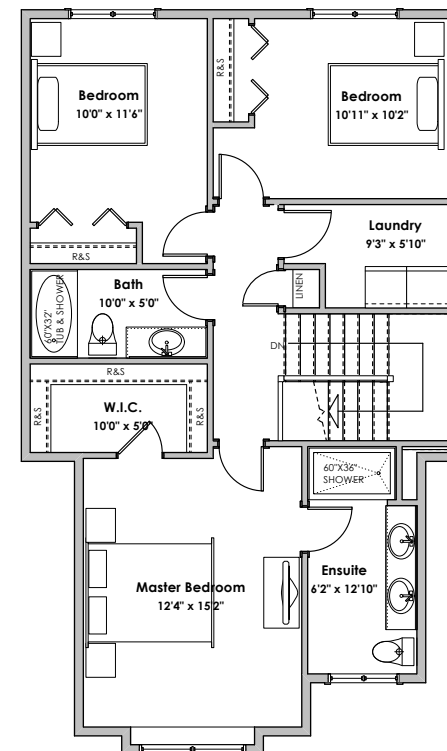
# WESTVIEW



Suite: 576 sq. ft.  
Primary: 189 sq. ft.  
Garage: 447 sq. ft.



Primary: 1134 sq. ft.



Primary: 915 sq. ft.

**LIVING AREA**  
Primary: 2238 sq. ft.  
Suite: 576 sq. ft.  
Total: 2814 sq. ft.

**OTHER**  
Garage: 447 sq. ft.



'Summit' Craftsman - 2,814 sq. ft.

[Westviewbc.ca](http://Westviewbc.ca)

\*NOTE: In the interest of maintaining high standards, the developer reserves the right to modify plans, specifications and design without prior notice. Drawings contained within are artist renderings only. Sizes and dimensions are approximate and may vary with actual plan and survey. Exterior style may change pending governing parties approval. Retaining wall location and types may vary and are subject to municipal, engineering or developer discretion. Subject to change without notice. Furniture as shown on plans are for layout purposes only and are not included in the sale.

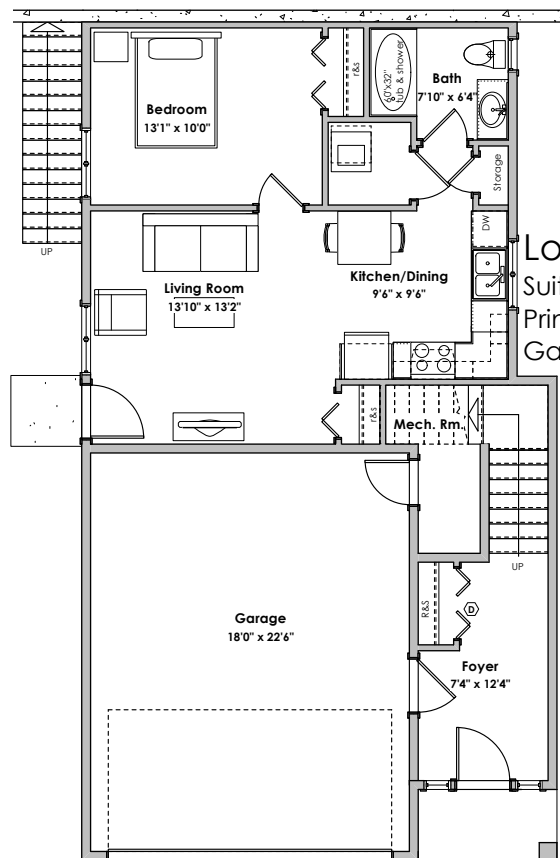
**VERITY**  
CONSTRUCTION

QUALITY CONSTRUCTION. TRUSTED SERVICE.

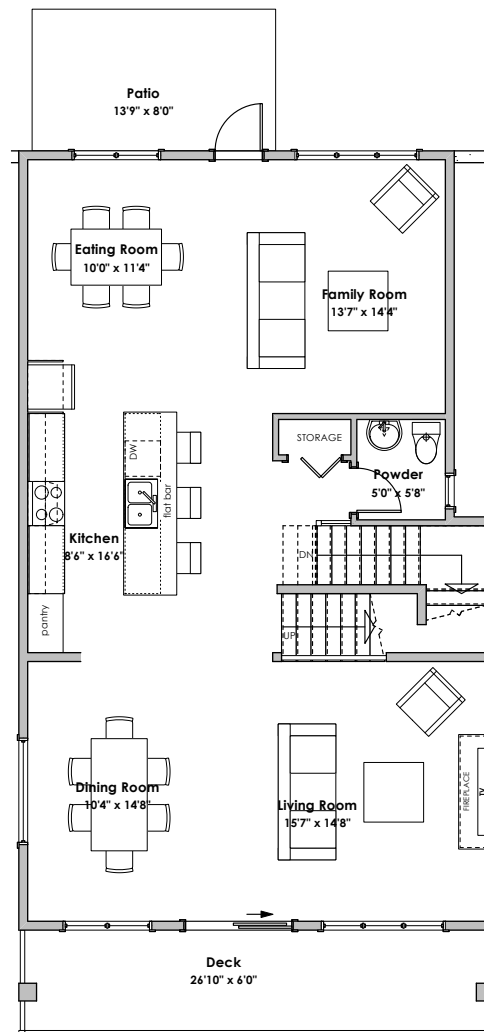
**ROYAL LEPAGE**

Helping you is what we do.

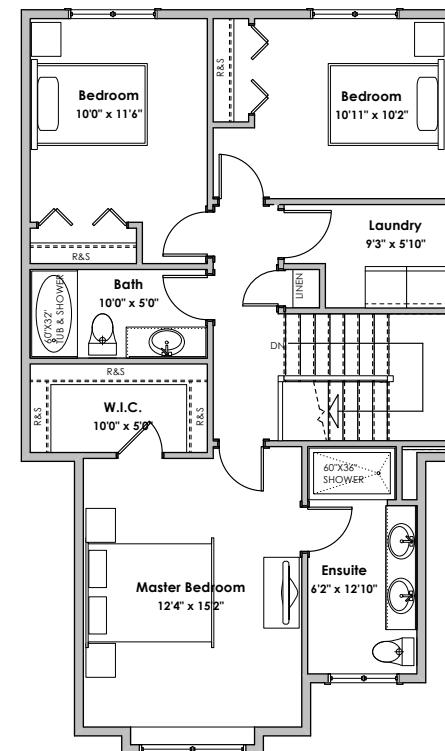
# WESTVIEW



Suite: 576 sq. ft.  
Primary: 189 sq. ft.  
Garage: 447 sq. ft.



Primary: 1134 sq. ft.



Primary: 915 sq. ft.

LIVING AREA  
Primary: 2238 sq. ft.  
Suite: 576 sq. ft.  
Total: 2814 sq. ft.

OTHER  
Garage: 447 sq. ft.



'Summit' Coastal - 2,841sq. ft.

[Westviewbc.ca](http://Westviewbc.ca)

\*NOTE: In the interest of maintaining high standards, the developer reserves the right to modify plans, specifications and design without prior notice. Drawings contained within are artist renderings only. Sizes and dimensions are approximate and may vary with actual plan and survey. Exterior style may change pending governing parties approval. Retaining wall location and types may vary and are subject to municipal, engineering or developer discretion. Subject to change without notice. Furniture as shown on plans are for layout purposes only and are not included in the sale.

**VERITY**  
CONSTRUCTION

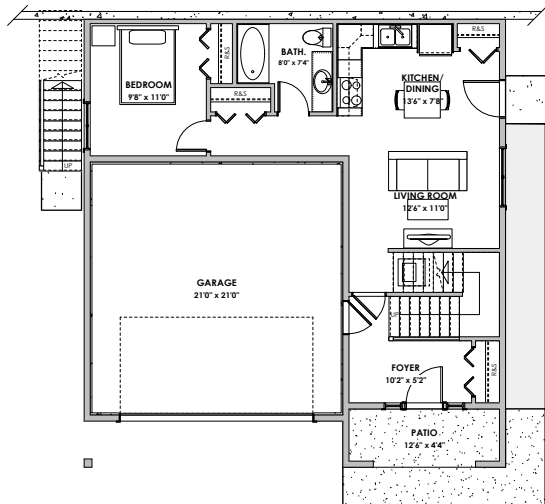
QUALITY CONSTRUCTION. TRUSTED SERVICE.

**ROYAL LEPAGE**

Helping you is what we do.

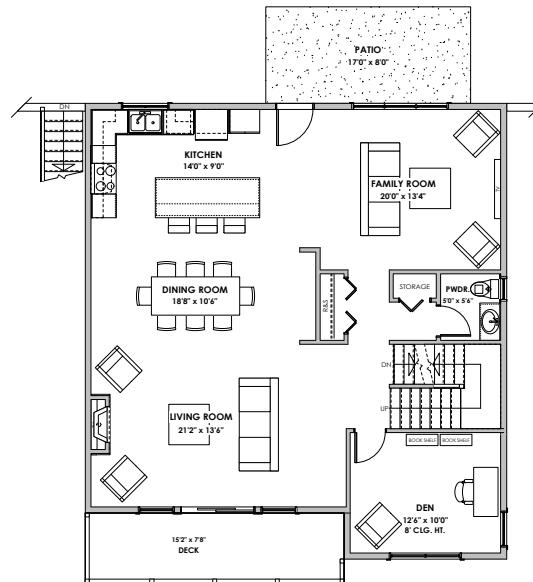


# WESTVIEW



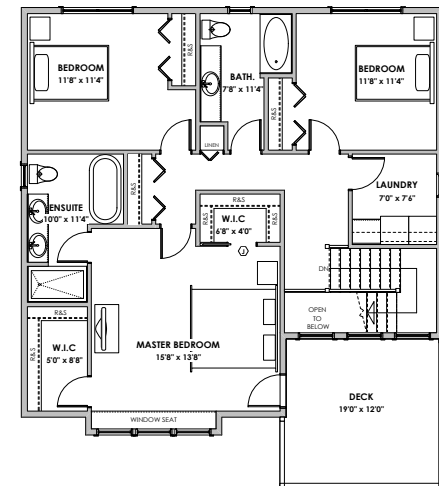
Lower Floor

Suite: 570 sq. ft.  
Primary: 123 sq. ft.



Main Floor

1174 sq. ft.



Upper Floor

1033 sq. ft.



## LIVING AREA

Primary: 2366 sq. ft.  
Suite: 522 sq. ft.  
Total: 2888 sq. ft.

## OTHER

Garage: 484 sq. ft.

\*NOTE: In the interest of maintaining high standards, the developer reserves the right to modify plans, specifications and design without prior notice. Drawings contained within are artist renderings only. Sizes and dimensions are approximate and may vary with actual plan and survey. Exterior style may change pending municipal approval.

Retaining wall location and types may vary and are subject to municipal, engineering or developer discretion. Subject to change without notice.

Furniture as shown on plans are for layout purposes only and are not included in the sale.

'Vista' Westcoast - 2,888 sq. ft.

Mike Hartshorne\*\* | 250-474-4800 | [WestviewBC.ca](http://WestviewBC.ca)

\*NOTE: In the interest of maintaining high standards, the developer reserves the right to modify plans, specifications and design without prior notice. Drawings contained within are artist renderings only. Sizes and dimensions are approximate and may vary with actual plan and survey. Exterior style may change pending governing parties approval. Retaining wall location and types may vary and are subject to municipal, engineering or developer discretion. Subject to change without notice. \*\*Personal Real Estate Corporation.

**VERITY**  
CONSTRUCTION

QUALITY. CONSTRUCTION. TRUSTED SERVICE.

**ROYAL LEPAGE**

Helping you is what we do.