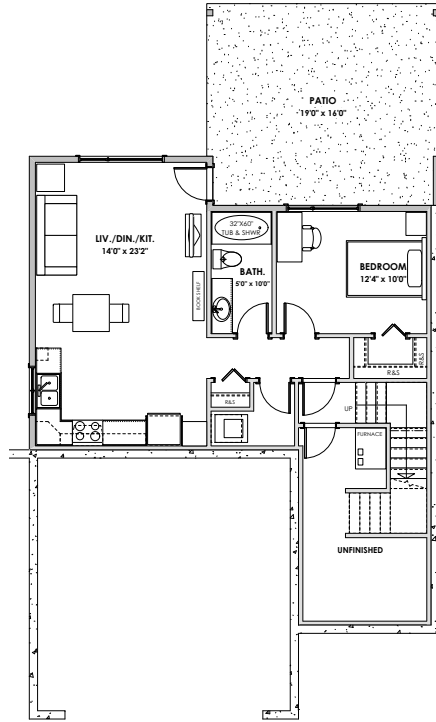
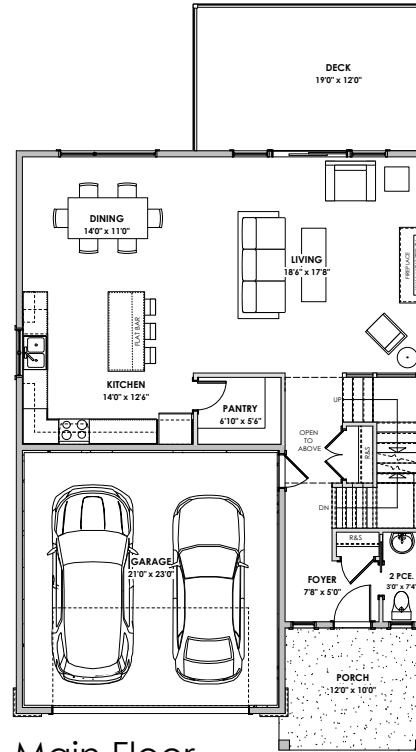


WESTVIEW



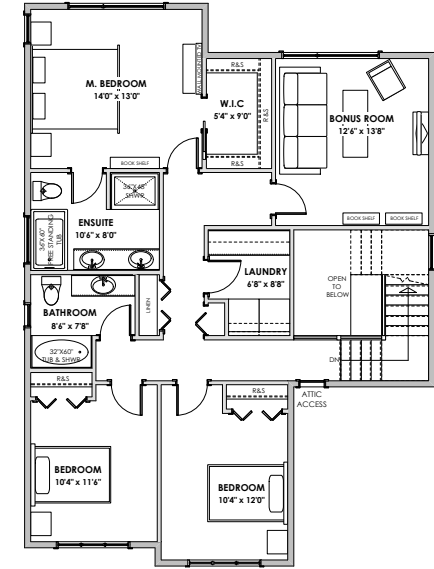
Lower Floor

Primary: 85 sq. ft.
Suite: 661 sq. ft.
Unfinished: 157 sq. ft.



Main Floor

Primary: 977 sq. ft.
Garage: 484 sq. ft.



Upper Floor

Primary: 1151 sq. ft.



LIVING AREA
Primary: 2213 sq. ft.
Suite: 661 sq. ft.
Total: 2874 sq. ft.

OTHER
Unfinished: 157 sq. ft.
Garage: 484 sq. ft.

*NOTE: In the interest of maintaining high standards, the developer reserves the right to modify plans, specifications and design without prior notice. Drawings contained within are artist renderings only. Sizes and dimensions are approximate and may vary with actual plan and survey. Exterior style may change pending municipal approval.

Retaining wall location and types may vary and are subject to municipal, engineering or developer discretion. Subject to change without notice.

Furniture as shown on plans are for layout purposes only and are not included in the sale.

'Sierra' Craftsman - 2,874 sq. ft.
Mike Hartshorne** | 250-474-4800 | WestviewBC.ca

*NOTE: In the interest of maintaining high standards, the developer reserves the right to modify plans, specifications and design without prior notice. Drawings contained within are artist renderings only. Sizes and dimensions are approximate and may vary with actual plan and survey. Exterior style may change pending governing parties approval. Retaining wall location and types may vary and are subject to municipal, engineering or developer discretion. Subject to change without notice. **Personal Real Estate Corporation.

VERITY
CONSTRUCTION
QUALITY. CONSTRUCTION. TRUSTED SERVICE.

ROYAL LEPAGE

Helping you is what we do.™