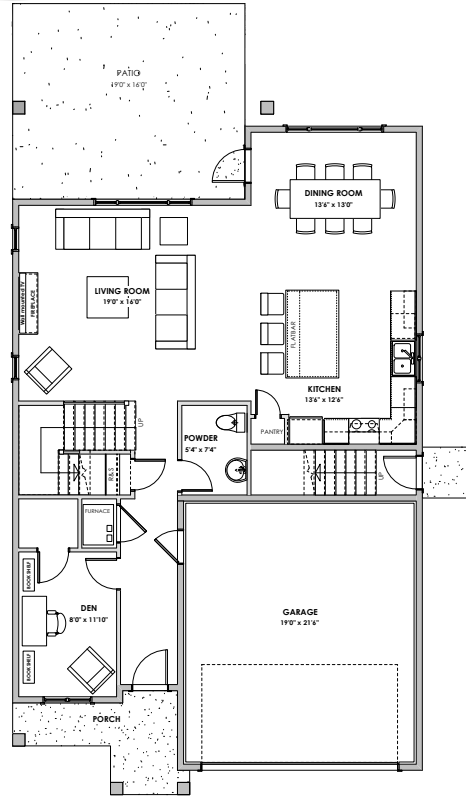
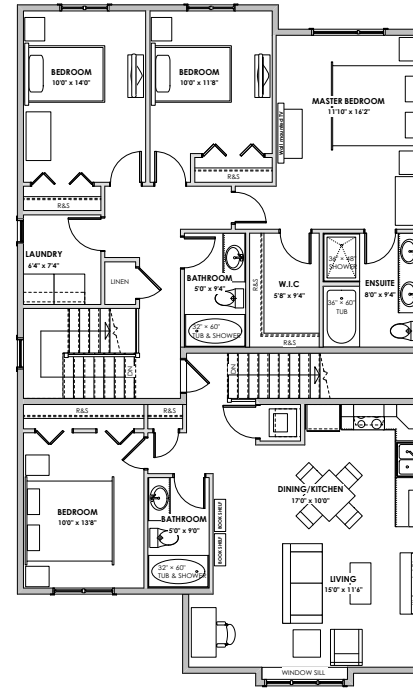


WESTVIEW



Main Floor

Primary: 1079 sq. ft.
Suite: 43 sq. ft.



Upper Floor

Primary: 969 sq. ft.
Suite: 750 sq. ft.



LIVING AREA
Primary: 2048 sq. ft.
Suite: 750 sq. ft.
Total: 2798 sq. ft.

OTHER
Garage: 450 sq. ft.

*NOTE: In the interest of maintaining high standards, the developer reserves the right to modify plans, specifications and design without prior notice. Drawings contained within are artist renderings only. Sizes and dimensions are approximate and may vary with actual plan and survey. Exterior style may change pending municipal approval.

Retaining wall location and types may vary and are subject to municipal, engineering or developer discretion. Subject to change without notice.

Furniture as shown on plans are for layout purposes only and are not included in the sale.

'Plateau' Traditional - 2,798 sq. ft.
Mike Hartshorne** | 250-474-4800 | WestviewBC.ca

*NOTE: In the interest of maintaining high standards, the developer reserves the right to modify plans, specifications and design without prior notice. Drawings contained within are artist renderings only. Sizes and dimensions are approximate and may vary with actual plan and survey. Exterior style may change pending governing parties approval. Retaining wall location and types may vary and are subject to municipal, engineering or developer discretion. Subject to change without notice. **Personal Real Estate Corporation.

VERITY
CONSTRUCTION
QUALITY. CONSTRUCTION. TRUSTED SERVICE.

ROYAL LEPAGE

Helping you is what we do.™