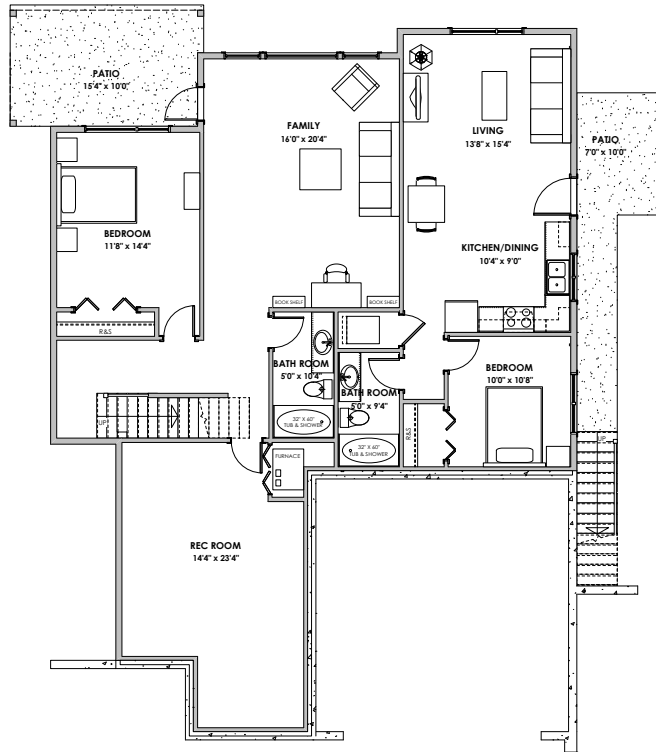
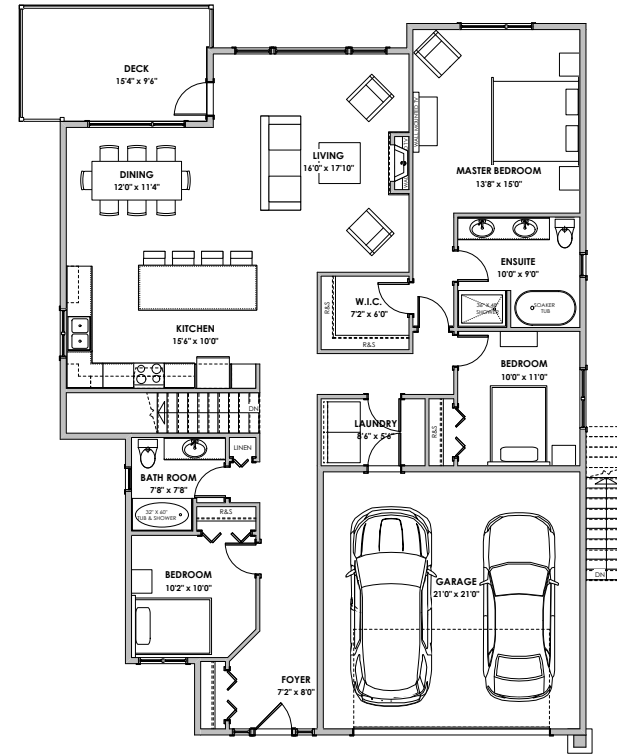


# WESTVIEW



Lower Floor  
1734 sq. ft.



Main Floor  
1727 sq. ft.



<b>LIVING AREA</b>	
Primary:	2871 sq. ft.
Suite:	589 sq. ft.
Total:	3460 sq. ft.
<b>OTHER</b>	
Garage:	484 sq. ft.

\*NOTE: In the interest of maintaining high standards, the developer reserves the right to modify plans, specifications and design without prior notice. Drawings contained within are artist renderings only. Sizes and dimensions are approximate and may vary with actual plan and survey. Exterior style may change pending municipal approval.

Retaining wall location and types may vary and are subject to municipal, engineering or developer discretion. Subject to change without notice.

Furniture as shown on plans are for layout purposes only and are not included in the sale.

'Knoll' Craftsman - 3,460 sq. ft.  
 Mike Hartshorne\*\* | 250-474-4800 | [WestviewBC.ca](http://WestviewBC.ca)

\*NOTE: In the interest of maintaining high standards, the developer reserves the right to modify plans, specifications and design without prior notice. Drawings contained within are artist renderings only. Sizes and dimensions are approximate and may vary with actual plan and survey. Exterior style may change pending governing parties approval. Retaining wall location and types may vary and are subject to municipal, engineering or developer discretion. Subject to change without notice. \*\*Personal Real Estate Corporation.

**VERITY**  
 CONSTRUCTION  
 QUALITY. CONSTRUCTION. TRUSTED SERVICE.

**ROYAL LEPAGE**  
 Helping you is what we do.™