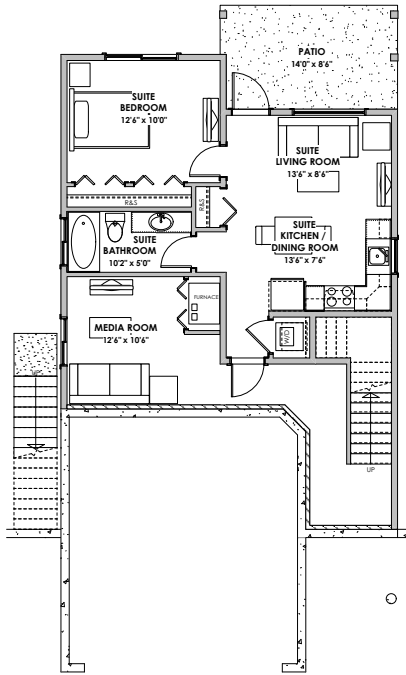
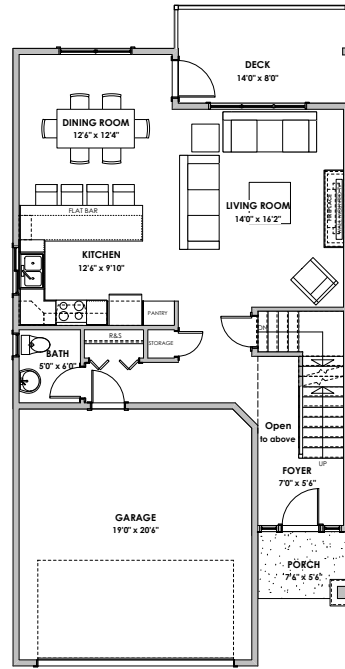


# WESTVIEW



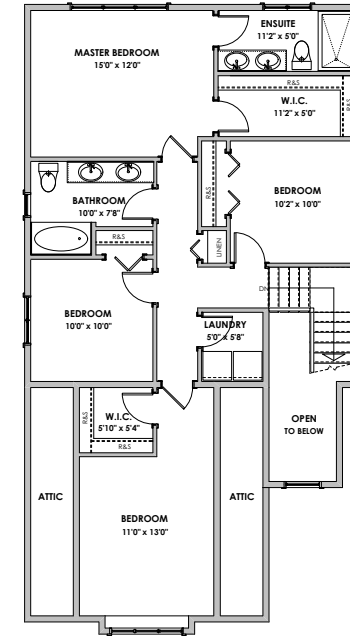
## Lower Floor

Primary: 309 sq. ft.  
Suite: 506 sq. ft.



## Main Floor

Primary: 815 sq. ft.  
Garage: 428 sq. ft.



## Upper Floor

Primary: 1018 sq. ft.



### LIVING AREA

Primary: 2142 sq. ft.  
Suite: 506 sq. ft.  
Total: 2648 sq. ft.

### OTHER

Garage: 428 sq. ft.

\*NOTE: In the interest of maintaining high standards, the developer reserves the right to modify plans, specifications and design without prior notice. Drawings contained within are artist renderings only. Sizes and dimensions are approximate and may vary with actual plan and survey. Exterior style may change pending municipal approval.

Retaining wall location and types may vary and are subject to municipal, engineering or developer discretion. Subject to change without notice.

Furniture as shown on plans are for layout purposes only and are not included in the sale.

'Bank' Craftsman - 2,648 sq. ft.  
Mike Hartshorne\*\* | 250-474-4800 | [WestviewBC.ca](http://WestviewBC.ca)

\*NOTE: In the interest of maintaining high standards, the developer reserves the right to modify plans, specifications and design without prior notice. Drawings contained within are artist renderings only. Sizes and dimensions are approximate and may vary with actual plan and survey. Exterior style may change pending governing parties approval. Retaining wall location and types may vary and are subject to municipal, engineering or developer discretion. Subject to change without notice. \*\*Personal Real Estate Corporation.

**VERITY**  
CONSTRUCTION  
QUALITY. CONSTRUCTION. TRUSTED SERVICE.

**ROYAL LEPAGE**

Helping you is what we do.™